



HAYLING ISLAND SAILING CLUB

A world class
championship venue





Contents




HISC – a world-class championship venue.....	4
Event venue	6
Field of play	10
Weather data	11
Accommodation	12
Previous experience.....	14
Media plan.....	15
Club management.....	15
Clubhouse.....	18
Sustainability plan	20
Local family activities	21



Hayling Island Sailing Club

Sandy Point
Hayling Island
Hampshire
UK
PO11 9SL

Tel. +44 (0)2392 463768
www.hisc.co.uk
secretary@hisc.co.uk

   [haylingislandsc](#)

The information contained in this document is for general information purposes only. The information is provided by Hayling Island Sailing Club and while we endeavour to ensure the information is correct, we make no representations or warranties of any kind, express or implied, about the completeness, accuracy, reliability, suitability or availability with respect to the information, products, services, or related graphics contained in the programme for any purpose. Any reliance you place on such information is therefore strictly at your own risk. Published 1 March 2019. © Hayling Island Sailing Club 2019. All rights reserved.

HISC – a world-class championship venue

As one of only four RYA coastal Centres of Excellence, Hayling Island Sailing Club is one of the leading sailing clubs in the UK. Founded in 1921 with some 3,000 members, the club has a permanent staff of more than 20 with an additional pool of temporary staff and highly skilled volunteers for major events.

Situated on a private peninsula of golden sand at the entrance to Chichester Harbour, the club enjoys a unique micro climate which provides ideal dinghy racing conditions in some of Britain's best sailing waters. Sailing is possible at all stages of the tide throughout the year.

With over 50 years' experience of organising National, International and Olympic training and selection events, HISC has the capability and track record to successfully host World Sailing accredited championships attracting 400+ entries.



Photo: Paul Wyeth

The club has played a leading role in British sailing, encouraging innovation and development and nurturing many generations of sailing champions including five Olympic medallists.

Some of the major championships HISC has successfully hosted in recent years include:

- RYA Youth Championships
- Laser World Championships
- RS Feva World Championship
- Solo National Championship
- International Moth National and World Championships
- RS200 National Championship
- 29er National Championship
- Tasar National Championship

The Venue

HISC offers access to two superb sailing areas; the sheltered waters of Chichester Harbour and the open water of Hayling Bay.

In addition the club offers:

- Highly experienced race management team
- Fully qualified International Race Officers
- Three committee boats, 3 large mark laying/patrol boats, 8 patrol boats, moorings, pontoon and ferry service
- Maintenance facilities
- On-site chandlery
- Scrutineer's shed for boat and sail measuring
- 360° race control tower
- Online registration and entry system
- Fast results processing and publishing
- Balcony views of the harbour race area
- Free space for boat and car parking
- Three launch and recovery areas with winches and hoists
- Numerous wash down and water points
- Chains for boat security
- Large wet snack bar, extensive restaurant and bar facilities
- Disabled facilities



Photo: RYA

Onshore Facilities:

- Accommodation to sleep 80
- Dining room with covers for 200
- Bar with capacity for 300
- Barista style coffee bar
- Wet snack bar & BBQ facilities
- Conference facilities for up to 150
- Car parking for 400 cars
- Internet access and free wifi
- First aid room
- Training rooms
- Protest rooms
- Extensive modern changing rooms with under floor heating
- Security lockers for personal belongings
- Houses to rent within walking distance of club
- Campsite and caravan parks nearby
- Race management facilities
- Private sandy beach for families
- Two local marinas

It's been an absolutely fantastic week at Hayling Island...the club and the volunteers are outstanding and have really supported a wonderful event...the weather has cooperated, and the standard of sailing has been the highest I think I've ever seen. It's been a brilliant event.

Mark Nicholls, Event Director,
Youth Racing Manager, RYA
April 2017



Photo: Peter Hickson

A quick note to say a massive thanks for all your support and efforts over the weekend. The venue, the facilities, the stretch of water and all your support really is by far the best package that we have found for our events. We really appreciate how professional you are and how this projects to the the fleet. First class, we'll be back!!!

Gareth Edwards
Laser Masters Committee
Laser Masters Nationals Championships 2018

The local area

With spectacular views of Chichester Harbour, the South Downs and the Isle of Wight, Hayling Island Sailing Club is located on a sandy peninsula known as Black Point. Hayling Island is a true island with road bridge access to the mainland and a foot passenger ferry to the nearby historic waterside city of Portsmouth. The Roman city of Chichester with its spectacular Cathedral and nearby Roman Palace are easily accessible for sight-seeing, shopping and restaurants.

The island boasts over 3 miles of Blue Flag beaches overlooking the world famous sailing waters of the Solent and Isle of Wight. Extensive opportunities exist for sailing, windsurfing, power boating, jet skiing, paddle boarding, canoeing, kayaking and swimming.

Hayling Island enjoys fast links to international airports, ferry ports and the UK motorway system.

Event venue

Safety

HISC's safety objectives are to maintain a high standard of safety without unduly constraining sailing activities. The volunteer safety team provide efficient and competent safety cover, allowing competitors the maximum enjoyment while minimising the risk to them and their boats, including sailing to and from the race course. Attention is paid to retiring boats during the race period and sufficient safety cover is provided to ensure competitors do not leave the advised route on passage back to HISC. Ashore, the race box safety cover dovetails with the on-water activities, ensuring all bases are covered for both competitors and safety teams.

Onshore facilities

With over 50 years' experience of organising National, International and Olympic training and selection events, HISC has the capability and track record to successfully host World Sailing accredited championships attracting 400+ entries.

Boat parks

HISC has some 800 dinghies stored ashore. There is a large beach area which is unoccupied by dinghies and can be used as temporary storage. The area behind the Dunes accommodation and the main car park are converted to boat storage during big events. There is space along the causeway for storage of windsurfers and smaller dinghies.



Launching facilities

HISC has three launching areas – North slip and 2 x east slip. These ramps allow access to a sand or shingle beach at all stages of the tide and there is adequate room for the storage of trollies on the beach whilst the boats are sailing.



Mooring facilities

HISC has 110 moorings, 11 of which are reserved for the RS Elite drysail fleet and are available for the club to use when the RS Elites are stored ashore. There are another four club moorings available for RIBs or committee boats. RIBs are launched from the beach by ToolTrak or tractor. The club moorings are serviced by the club ferry operating from the north beach pontoon and accessible at all states of tide. MDL Sparkes Marina, also accessible at all states of tide, is close by where any overflow boats can be berthed.

Equipment inspection facilities

The open-plan Scrutineering/Marine Shed is purpose built as a spacious equipment inspection and measurement area.



Catering facilities

The club has a full-time staff of professional chefs. Food is served in the first floor dining room and ground floor wet snack bar. The dining room seats 200 and the snack bar seats 50. Additionally, outdoor dining areas can seat over 100 in favourable weather.



Onsite parking

With the main car park converted to boat park, the club has onsite parking, free of charge, for some 400 vehicles. All onsite parking is within walking distance of the venue.

Site plan





Race management suite



Race control tower



Dining room



Main bar

Race management

We have a fully operational Race Management Suite with flag halyards, flags, high powered binoculars, tannoy system, VHF communications and telephone.

Fresh water

Mains water is distributed via 12 garden hosepipes around the club dinghy parks.

Office space

Three fully-furnished, multi-functional training rooms are available as office space in addition to the Race Management Suite.

Overall size

HISC is situated on a sandy peninsular at the mouth of Chichester Harbour. The site covers approximately 9 acres and comprises extensive dinghy parking, car and trailer parking, marine shed, launching ramps, floating pontoon, swinging moorings and separate accommodation blocks. The clubhouse offers extensive office space, configurable male and female ground floor changing rooms and showers, training rooms, race management suite and control tower, two bars, snack bar and dining room.

Communications and logistics

HISC has a broadband dedicated fibre line with upload and download speeds in excess of 50mbps.

Campervans

The club is unable to accommodate motorhomes and camper vans overnight, however there are several serviced campsites on Hayling Island. Fishery Creek is within easy cycling distance and HISC can provide a shuttle service.

Supporters/volunteers area to work

There are two bars and the main dining room which are open all day with access to power sockets and free WiFi.

Normal club activities

HISC is a busy club with a full calendar of events. the calendar is planned a year in advance and large open events are scheduled to run harmoniously with club racing.

Security day and night – accreditation

CCTV cameras have been updated in 2018 and cover most of the site. Vehicle access to the site is controlled by an automatic barrier system with card and keypad control. Additional third party event security can also be arranged.

Bridge VHF – Race control tower

The Race Control Tower is fully equipped with flag halyards, flags, high powered binoculars, tannoy system, VHF communications and telephone with good visibility to the race area.

Tally point

Three tally boards each for more than 100 boats with up to three tally points.

Onshore facilities

Showers, changing rooms and general facilities for more than 500 people on site at any one time.

PA system comms

New site-wide tannoy system installed in 2018

Press centre

This would be situated in one of the training rooms or in the Race Management Suite.

Organising Committee facilities

In addition to the first floor Race Management Suite, there are three adjacent training rooms on the ground floor which can be configured as one open plan, or two or three separate rooms. The Race Management Suite serves as the Race Management Office, Press Centre and Results Office. The Training Rooms would initially serve as the event registration area and subsequently be reconfigured to serve as Protest Rooms and adjacent Jury Secretary Office.

Medical Centre

HISC has a dedicated Medical Room and comprehensive safety and medical policies and procedures in place which are available on request.

Official boats

Four race committee boats and 11 RIBs available. Additional RIBs can be chartered as required.

Competition management equipment

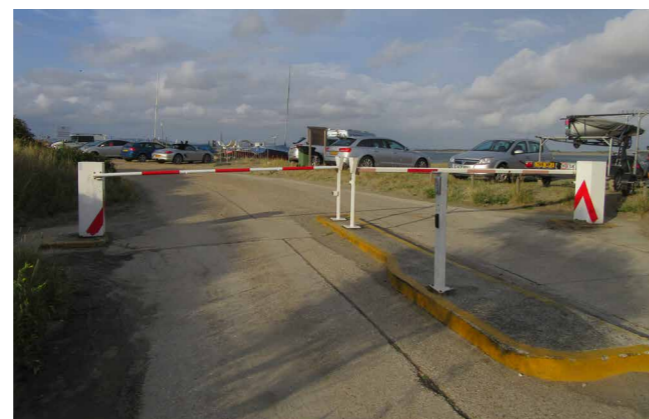
All committee boats and RIBs are equipped with VHF radio. All committee boats are fitted with horns for sound signals and masts for displaying visual signals. The club has a range of racing marks with ground tackle.

Organising committee staff, officials and volunteers

The club has more than 3,000 members with a huge pool of volunteers who assist in the running of events throughout the year. There are 25 full time staff who run the club operations both ashore and on the water. Amongst the club membership there are two International, four National and eight Regional Race Officers with 10 qualified Mark Layers.



Fishery Creek campsite



Secure barrier entry system to the site



Three adjoining training rooms



Over 18s bar and coffee lounge

Field of play

Time to race area

Dependent on wind and tide, sailing time to the race area is not normally more than 45 minutes, with the average sailing time some 30 minutes.

A range of courses

The courses are laid in Hayling Bay and Bracklesham Bay. A number of configurations are available with up to five different course areas of varying sizes.

Course diameters

There is ample space in Hayling Bay and Bracklesham Bay to lay non-overlapping courses.

Maximum depth

Maximum depths in the course areas are less than 10 metres.

Maximum current

Maximum current (HW Springs) in Hayling Bay is approximately 1.0 knots and 1.3 knots in Bracklesham Bay. Maximum current in both Hayling Bay and Bracklesham Bay is less than 1 knot.

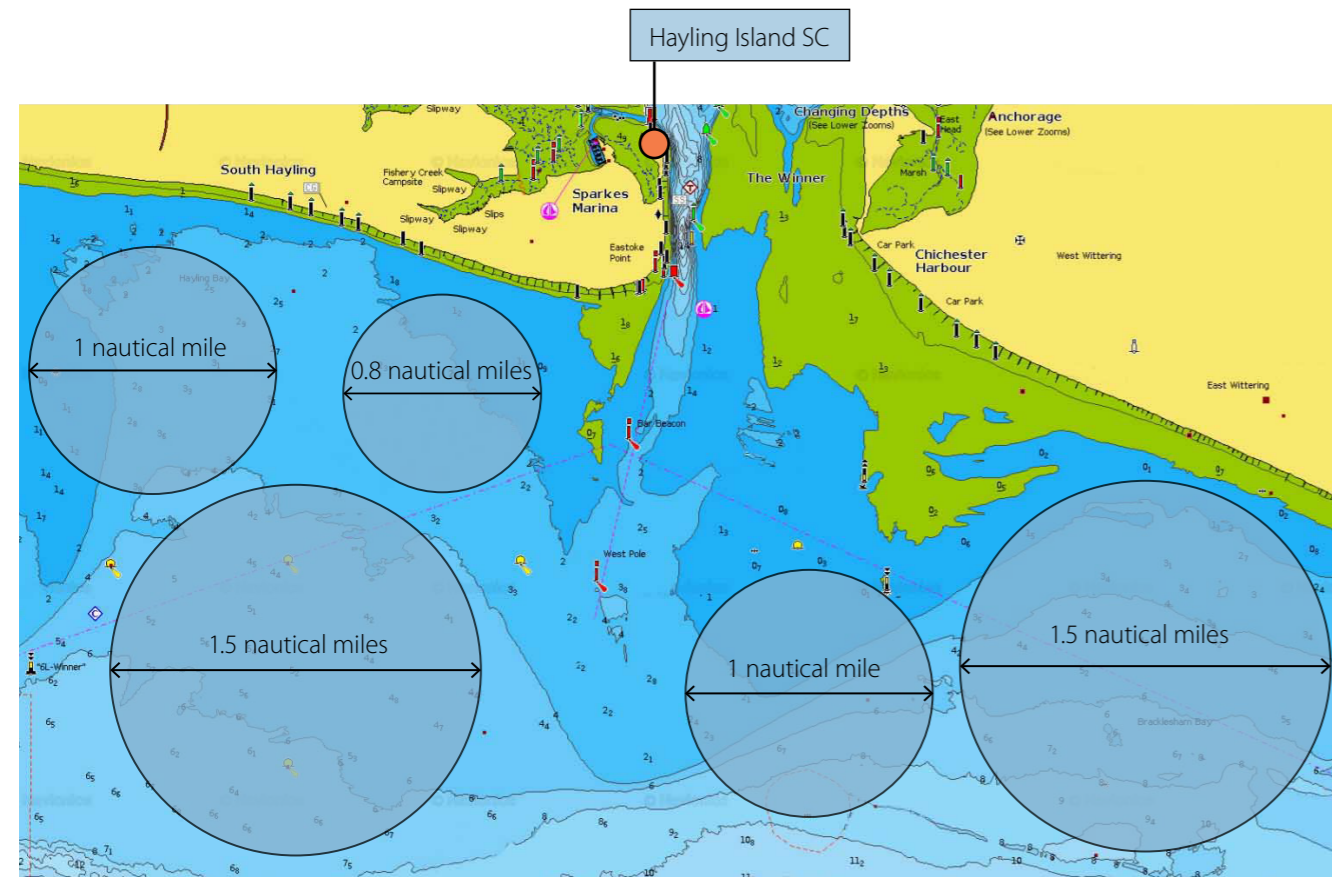
Traffic

There is minimal commercial traffic in and around Chichester Harbour and the field of play.

Relevant Harbour Authority restrictions

An 8 knot speed limit is in force for the whole of Chichester Harbour. All vessels using Chichester Harbour have to pay harbour dues – collection and payment will be arranged by HISC. All events at HISC are run in accordance with the Chichester Harbour Federation Code of Conduct for Racing.

Hayling Bay and Bracklesham Bay

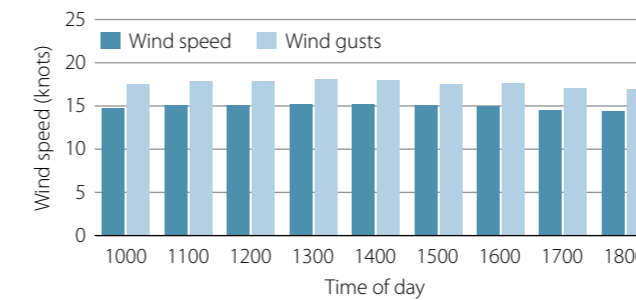


Base chart: Navionics
Not to be used for navigation

Weather data

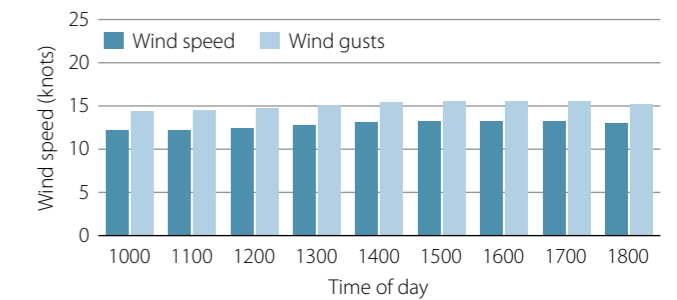
Analysis of recorded data in Hayling Bay from 2010–2019 every day between the hours of 10am and 6pm. Recorded by CHIMET from instrumentation based on West Pole Beacon about 1 mile out to sea from the entrance to Chichester Harbour.

January and February Averages



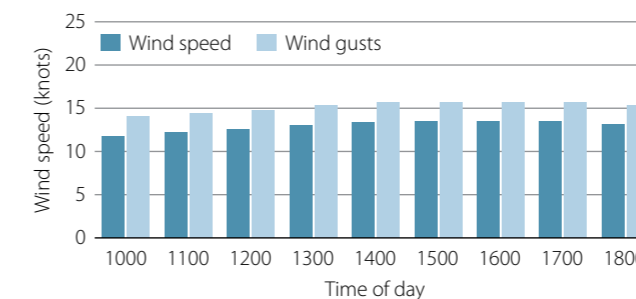
Average wind direction	200°	203°	205°	207°	208°	209°	212°	217°	218°
Average air temperature	5.8°	6.1°	6.4°	6.7°	6.8°	6.8°	6.7°	6.5°	6.3°

March and April Averages



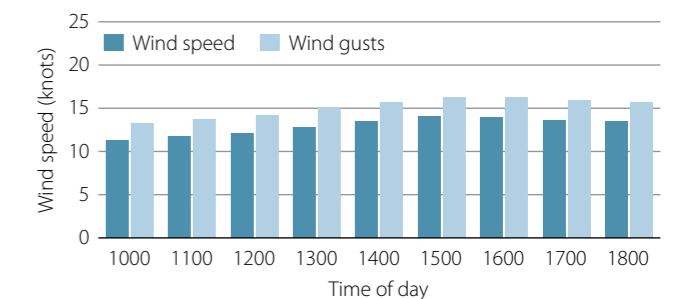
Average wind direction	229°	232°	235°	235°	236°	236°	234°	238°	237°
Average air temperature	6.9°	7.3°	7.5°	7.7°	7.7°	7.8°	7.9°	7.8°	7.6°

May and June Averages



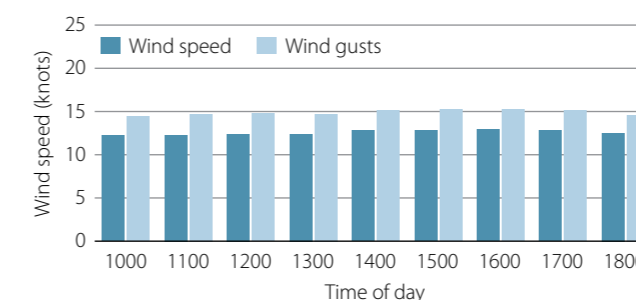
Average wind direction	184°	181°	183°	188°	189°	186°	195°	192°	195°
Average air temperature	14.1°	14.4°	14.5°	14.6°	14.8°	14.9°	15.1°	15.1°	15.3°

July and August Averages



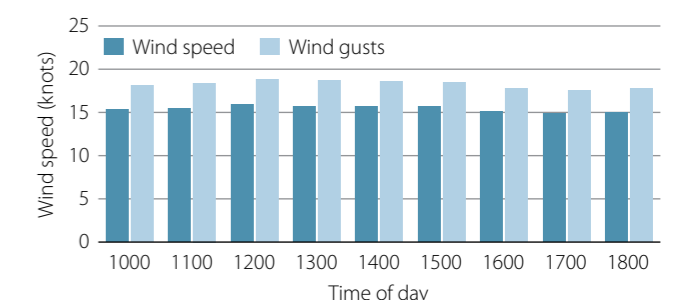
Average wind direction	211°	209°	210°	210°	212°	213°	214°	216°	219°
Average air temperature	17.7°	17.9°	18.2°	18.2°	18.3°	18.3°	18.4°	18.5°	18.5°

September and October Averages



Average wind direction	175°	175°	175°	179°	182°	181°	182°	183°	182°
Average air temperature	14.6°	15.0°	15.4°	15.6°	15.8°	15.4°	16.0°	15.9°	15.7°

November and December Averages



Average wind direction	206°	207°	210°	209°	214°	212°	212°	213°	209°
Average air temperature	8.9°	9.2°	9.4°	9.6°	9.7°	9.6°	9.5°	9.3°	9.2°

Onsite accommodation

Our convenient and comfortable accommodation is located in two blocks, Stocker and Dunes, both situated near the clubhouse. Bedding is supplied in all rooms but guests need to bring their own towels. All prices stated are per room, per night.

Stocker

Comprises two-bedded bunk rooms, double-bedded rooms, triple-bedded bunk rooms and an eight-bedded dorm style bunk room. The Stocker block has recently been refurbished and contains wifi and electric sockets in all rooms, with shared shower and toilet facilities on both levels.

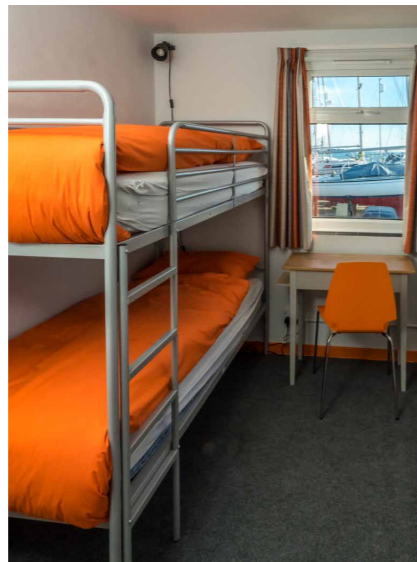


Captain's and Admiral's Cabins

Double-bedded rooms sleeping two with a sink and storage space. The Admiral's Cabin is our disabled access room and includes an en-suite wetroom. £45 members (£50 non-members).

Commodore's Cabins

Double bed with a single bunk on top sleeping three people, with two sharing a bed. £50 members (£60 non-members).



Ensign's Cabins

Bunk rooms sleeping two people. £40 members (£50 non-members) or £25 member's single occupancy (£35 non-members single occupancy).

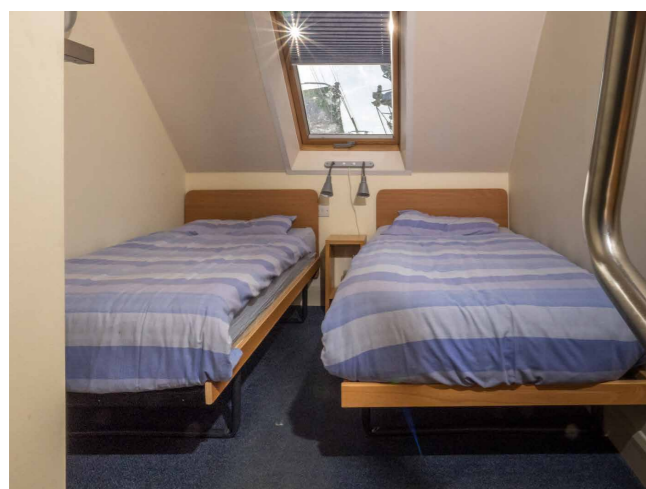


Cadet's Cabins:

Bunk dormitory room sleeping eight people in bunk beds with en-suite shower room. £120 members (£160 non-members).

Dunes

Comprises ten mezzanine style rooms, each one sleeping up to three adults or two adults and two children with two single beds and a small double bed on the mezzanine level, plus an en-suite shower room. £60 members (£70 non-members)



Dunes rooms sleep four with en-suite facilities

Offsite accommodation

There are numerous offsite accommodation options locally including hotels, B&Bs, self-catering apartments as well as touring caravan and camp sites.

Langstone Quays Resort	Northney Road, Northney	PO11 0NQ	Hotel
Newtown House Hotel	Manor Rd, HI	PO11 0QR	Hotel
Premier Inn	Havant South	PO9 1RE	Hotel
Ann's Cottage	45 St Andrew Rd, HI	PO11 9JN	B&B
Cockle Warren Guest Hse	36 Seafront, HI	PO11 9HL	B&B
Copsewood House	Copse Lane , HI	PO11 0QD	B&B
Pams	203 Havant Rd, HI	PO11 0LG	B&B
Waratah Lodge	116 Havant Rd, HI	PO11 0LJ	B&B
Ravensdale	19 St Catherines Rd, HI	PO11 0HF	B&B
St John's	21 Manor Way, HI	PO11 9JH	B&B
The Coach House	Church Lane, Northney	PO11 0SB	B&B
The West Town Hotel	52 Station Rd, HI	PO11 0EL	B&B
The White House	250 Havant Rd, HI	PO11 0LN	B&B
Turanga House	68 West Lane, HI	PO11 0JL	B&B
Pam Elliott	Mengham Ave, HI		B&B
Oriel House	26 Bracklesham Rd, HI	PO11 9SJ	B&B
Crowberry Lodge	Manor Rd, HI	PO110QH	B&B
Kingfisher	10 Chichester Ave, HI	PO11 9EZ	B&B
Brian and Jill Thornton	86 Sinah Lane, HI	PO11 0HJ	B&B
Heather Kruk	15 Seafront Estate, HI	PO11 9JJ	B&B
Pilley Green	29 Chichester Ave, HI	PO11 9EZ	B&B
Lorna Shields	Sandy Beach Estates, HI		B&B
Millers Estate Agents	19 Mengham Rd, HI	PO11 9BG	Self catering
Charlotte McDuff	Sandy Beach HI	PO11 9RG	Self catering
Charlotte McDuff	Nab Tower, Southwood Rd, HI	PO11 9QH	Self catering
Laura Turner	Whitecaps, 17 Sandy Beach Est, HI	PO11 9	Self catering
Karen Miller	Southwood Rd, HI	PO11 9	Self catering
Avril Hardy	Bay Tree Cottage, Westbourne	PO10 8SQ	Self catering
Fishery Creek Park	Fishery Lane, HI		Caravan & Camping
Fleet Farm	Yew Tree Rd, HI		Caravan & Camping
Fleet Park Caravan & Camp	Yew Tree Rd, HI		Caravan & Camping
The Oven Campshite	Manor Rd, HI		Caravan & Camping
Hayling Island Holiday Park	Manor Rd, HI (4/6 berth mob home)		Caravan & Camping
Birdham Park	Birdham Rd,		Caravan & Camping
AJ Caravan Park	38 Haven Rd, HI	PO11 9RY	Caravan & Camping

Previous experience

Laser Master World Championships	2010	420 boats
Laser World Championships	2010	260 boats
Flying Fifteen World Championship	2011	113 boats
RS Feva World Championship	2012	175 boats
International Moth World Championship	2014	138 boats
RS200 National Championship	2015	119 boats
49er & 49erFX National Championship	2015	18 boats
Finn, Blaze National Championships	2015	95 boats
RYA Youth Selector	2016	100 boats
Laser Masters National Championships	2016	110 boats
Fireball National Championship	2016	60 boats
RS400, RS700, RS800 National Championships	2016	107 boats
RYA Youth National Championships	2017	258 boats
Laser Masters National Championships	2017	110 boats
RS Summer Championships	2017	210 boats
505 & Flying Dutchman National Championships	2017	50 boats
RS Aero National Championships	2017	117 boats
Laser Masters National Championships	2018	110 boats
29er National Championship	2018	67 boats
Solo National Championship	2018	107 boats
Tasar & Contender National Championships	2018	85 boats



Thank you for a brilliant event this weekend. The conditions were fantastic but the race and shore teams did an outstanding job – a number of sailors told me how much they enjoyed the weekend and how well HISC delivered the event. Eight races in mixed conditions then pack up in the sun and leave by 3:15pm...amazing.

Paul Hammett
Chairman 29er UK Association
29er Grand Prix March 2017



Dear HISC – It was wonderful – very slick race management and great fun on shore. We will definitely be back...it is great to see HISC as it should be – busy with sailors. Thanks to you all and your teams for all the effort that you put in before, during and after these events.

Heather Chipperfield
RS Class Association
2017



Media

- Onsite facilities to host visiting media – dedicated media area/lounge with access to fast internet, secure storage area, desks and plugs for journalists, photographers etc
- On-water dedicated media boat for photographers, journalists, etc. to report on the daily racing can be arranged on request
- In-house database of yachting media, local media, television, radio and online media
 - Portsmouth Evening News
 - Chichester Observer
 - Hayling Islander
 - Postcode Publications
 - Hayling Today
 - BBC South Today News
 - ITV Meridian
 - BBC Radio Solent
 - Capital Radio South Coast
 - Heart FM
 - SAM FM
 - All the main UK dinghy and yachting magazines
- Pre-event publicity programme to promote the event, keep media informed of entries, race schedule, timings, etc.
- Liaison with the main yachting and local media with

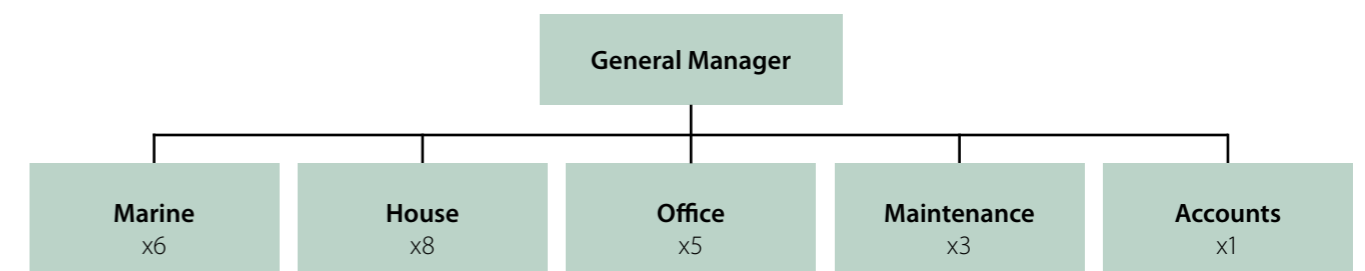
- regard to interviews, articles, photo opportunities, etc.
- Circulating and distributing results, images and daily race reports via social media (Facebook, Twitter, etc.)
- Ability to host pre, during and post-event media conferences if required
- Proven track record in generating media news items and editorial on major events held at HISC over the past 10-15 years. For example, recent online presence:

Solo National Championship 2018 over six days

HISC Facebook views	6,983
HISC Twitter views	8,500
HISC website visitors	2,779
HISC website page views	21,530
HISC Photo Gallery	20,000
Desktop	44%
Mobile device	56%

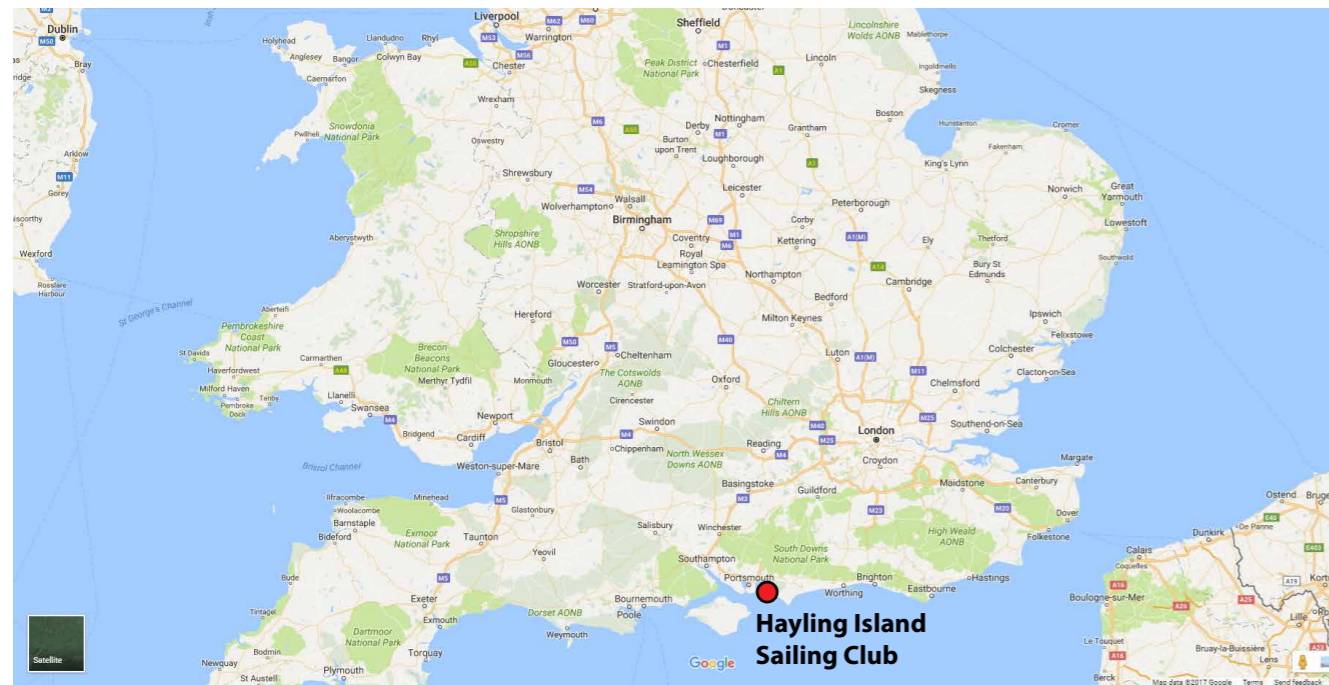
Club management

A professional management team look after the day-to-day running of Hayling Island Sailing Club on behalf of the membership.



Total team of 23 permanent staff plus 20 seasonal, temporary staff

Getting to Hayling Island



By Road

Hayling Island is on the south coast of Hampshire between Portsmouth and Chichester. Whatever direction you are coming from, head for the A27/M27 South Coast road. For visitors coming from the North, take the A34 and M3 to join the M27 or, from London and the East Coast, follow the A3 south to join the A27.

Leave the A27 at the Havant / Hayling Island exit. Head south on to the A3023 which takes you on to Hayling Island. Road access to Hayling Island is via a single road bridge that makes up a stretch of the A3023. As the only

access road, the bridge can get busy during peak times, so be sure to leave adequate time when travelling in either direction. See opposite for local directions.

By Train

The closest railway station is Havant (HAV). Regular services run from London Victoria, London Waterloo, Gatwick, Portsmouth, Southampton and Brighton.

From Havant station travellers can either take a taxi or hop on a bus from the nearby bus station. The 30/31 service visits Sandy Point with frequent

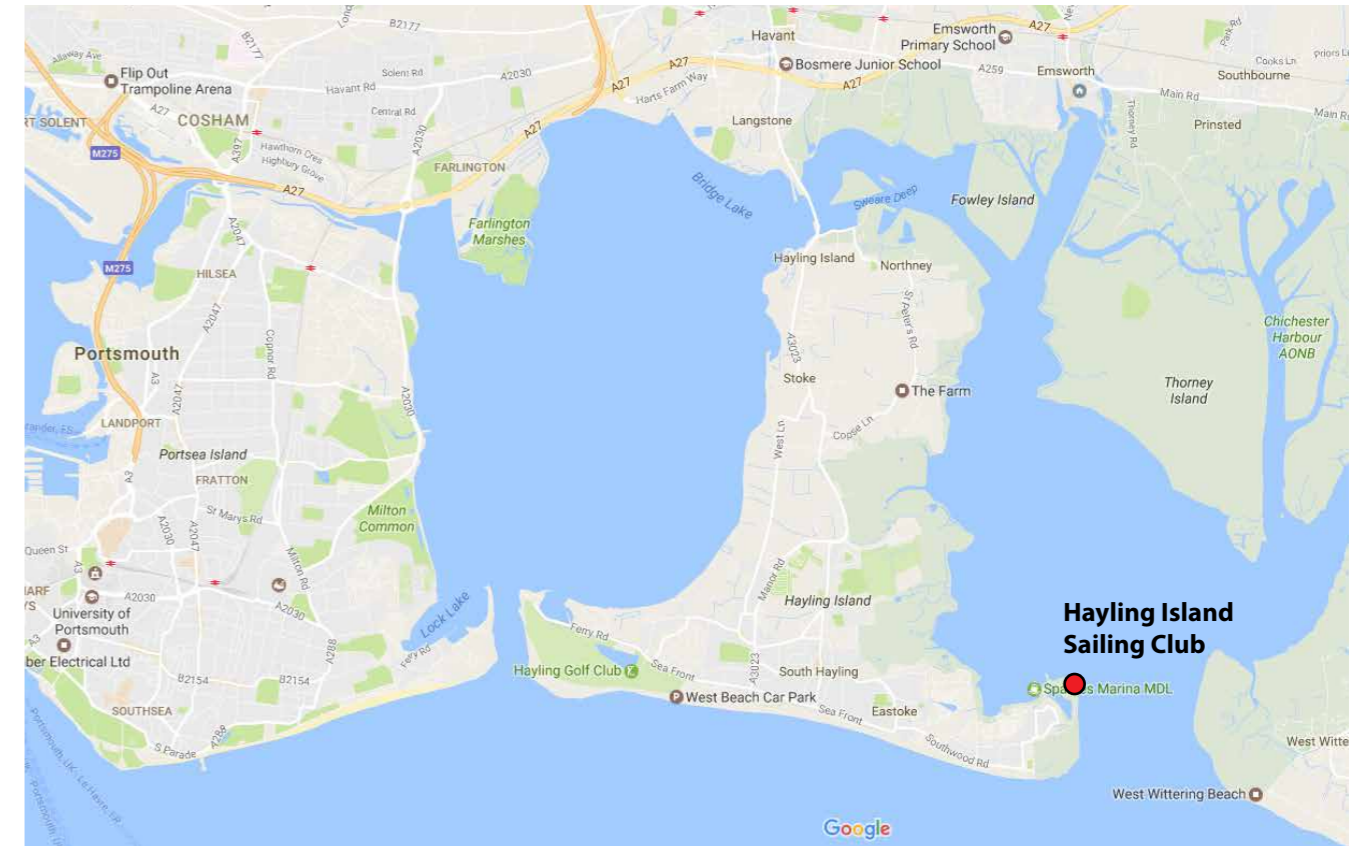
buses (every 15 mins at peak times) Monday to Saturday between 05:45 and 22:00. On Sundays, a half-hourly service starts at 08.05 through to 19.35 and runs every other hour.

By Air

The closest international airport is Southampton International Airport, which is 23 miles by road or a short train journey to Havant Station. Hayling Island is 67 miles from Heathrow airport and 68 from Gatwick.

International Ferry

The international ferry port at Portsmouth is 8 miles by road.

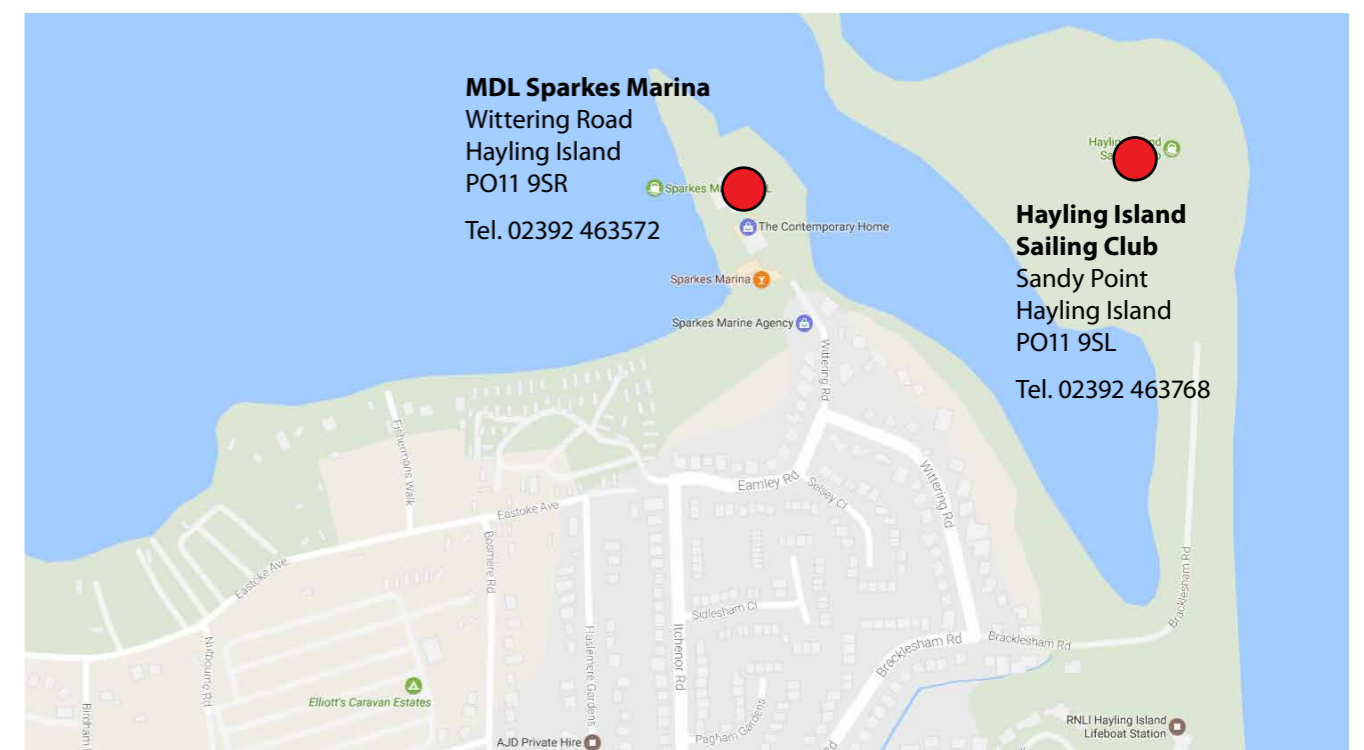


Local directions

Take the A3023 (Havant Road) sign-posted Hayling Island from the M27. Proceed on the A3023 over Langstone bridge to a roundabout (approx 3,25 miles). At the roundabout take the first exit left to Mengham / Eastoke (Church Road). Drive straight through Mengham village (Elm Grove) to

the seafront (approx 1 mile). At the T-junction on the seafront turn left to Sandy/Eastoke end, then drive along the seafront for approx 0,25 mile. The road curves to the left, take the first right on the bend into Southwood Road. Drive to the end of Southwood Road until you come to a dead-end

sign (approx 1 mile). Turn left here into Bosmere Road. Drive along Bosmere Road and at the T-junction turn right into Sandy Point Road then take the first left into Bracklesham Road. After 0.25 mile, just before the HISC entrance gate, turn left into Wittering Road which leads into MDL Sparkes Marina.



Clubhouse



Photo: Peter Hickson

Our clubhouse sits on a beautiful sandy peninsular at the entrance of Chichester Harbour, with beautiful, unspoilt panoramic views of the South Downs and Wittering coastline.

An outstanding venue, HISC has much to offer sailors and non-sailors alike. The stunning clubhouse and landscapes make it the perfect location for a wedding reception, christening and corporate event as well as family celebrations.

With fresh homemade food, clean and comfortable onsite accommodation, a reasonably priced bar and friendly and professional team, HISC is the ideal venue for your event. The clubhouse has excellent versatile facilities, with unsurpassed views, which can accommodate up to 180 guests in the spectacular restaurant and two bars. Whether you are planning a wedding, social gathering, fundraiser or birthday party, our entertaining spaces are certain to be a wonderful setting for your gathering.

Our experienced team will ensure that you and your guests have truly memorable experience. Choose from an array of catering choices, which include a wide selection of canapés,

function and drinks menu packages. For bespoke menus, John our chef will happily accommodate your every need to ensure that your day is extra special.



Photo: Peter Hickson

Food and drink at the Club

As a Member, you are given a membership card when joining the club. This card can be loaded with credit either from any till point or online and used to buy food and drink at a 10% discount. Children are given their own cards from the age of eight.

Dining

All year round, our highly experienced chefs produce breakfasts, lunches and dinners for members and visitors. If you have any dietary requirements, please let our team know and they will be happy to suggest a meal that will suit your needs. Check our weekly newsletter and website for current service times. Generally, we are open as follows:

Breakfast

Servery breakfast every Saturday and Sunday, until the Summer school holidays when we open every day. The legendary HISC full English or porridge and continental options are served from 8am to 10.30am

Lunch

Servery lunch is available every Wednesday, Thursday, Friday and Sunday. We have a Traditional Roast Carvery on Sundays and on other days we offer a selection of sandwiches, soups, salads and hot dishes from 12 to 2.30pm. During School holidays, lunch switches to the Snack Bar with the exception of Sunday's carvery.

Dinner

Evenings see a variety of styles and menus from the Servery and cooked to order. There is always a traditional homemade pie on the menu along with lots of other seasonal dishes. Dinner is served from 7pm to 9pm on Wednesday, Friday and Saturday nights all year round. This expands to include Thursday evenings when sailing is on and is offered every evening during school holidays.

Snack Bar

The Snack Bar is our wet eating area where hungry sailors can come in

straight off the water and enjoy hot and healthy meals and snacks. We also offer salads, paninis, rolls, sandwiches, soup, and the chef's dish of the day.

Bar

We are very fortunate to have two Bars at HISC. The over 18's bar is a quiet and peaceful place where you can have a relaxed drink, read a book or catch up with friends. This bar can be booked for private dinner parties and we can cater for up to 30 people in this lovely room. During the day, the over 18s bar is home to our hugely popular barista style coffee lounge. The Coffee Bar at HISC is open Wednesdays, Thursdays & Fridays 11am – 5pm and on weekends 10am – 6pm.

The main bar is a busy spot, catering for all members and visitors. Many a great party has been held in this bar and the House Committee have plenty of fantastic events lined up for this year.

The bar is open on a Wednesday, Friday, Saturday and Sunday throughout the year. It opens on a Thursday when sailing is underway and during the summer school holidays, the bar is open every day and night.

Parties

Did you know that we offer club members room hire free of charge for parties and events? If you have a milestone birthday, anniversary or just want to have a party please get in touch with our Events Manager on 02392 463768.



Sustainability plan

Hayling Island Sailing Club is committed to minimising the impact of its activities on the environment. This Policy Statement sets out how we will work towards achieving our environmental objectives.

- We will meet the environmental legislation that relates to the operation of the clubhouse and boat park, and where possible identify opportunities to adopt best practice over and above the minimum legislative requirements.
- We will ensure that club safety boats are fuelled safely and responsibly to avoid spillages and pollution. All safety boats will carry a spill kit. Safety boat drivers will be trained in refuelling good practice and the use of spill kits.
- We will minimise the use of electricity in all of our activities. For example; automatic motion sensor lights, turning off lights, replacing old light bulbs with energy efficient models.
- We will minimise the use of water in all of our activities. For example; fitting hoses with automatic trigger nozzles and turning off taps when not in use.
- We will minimise the creation of waste. For example; we will only print and photocopy if absolutely essential and then print double-sided.
- We will minimise the use of single use plastics. For example, providing water fountains to allow people to refill their own bottles. Where plastic glasses are needed these will be reusable ones. Only biodegradable coffee cups and straws will be used in the club house.
- Where possible, we will use email rather than printed materials to communicate and promote our activities. We will ensure that paper used for printed materials is Forest Stewardship Council (FSC) Certified.
- We will recycle as much waste as possible by providing adequate clearly labelled bins and increasing our waste and recycling bins and/or collections during busy events.
- We will provide suitable containers for the disposal of hazardous waste streams.
- We will encourage members to scrub down their boats and apply antifouling in a designated area, collect scrapings and dispose of as hazardous waste.
- We will endeavour to take a sustainable approach to running events.
- We will promote relevant local environmental information to our members such as the location of voluntary no anchor zones, sensitive habitats/species.
- We will publicise our environmental commitment and promote sustainability amongst our members and visitors on our website and club notice boards.
- We will take the environmental credentials of our suppliers into account when procuring new products. By doing so we wish to encourage other organisations to integrate sustainability into their operations.
- We will measure our progress and review this policy on an annual basis.

Local family activities



Hayling Island Funland Amusement Park

On the seafront, Funland Amusement Park offers a variety of attractions indoors and out. Outside, you can enjoy family fun rides such as the 'Dodgems' along with exciting white knuckle rides like the breathtaking 'Mine train roller coaster'. Inside, try Ten Pin Bowling, the action of the Kidz Kingdom for the children, or interact with over 200 video and traditional slot machines or games of skill.

www.funland.info



The Hayling Billy Trail

The Hayling Billy Trail is not just for a great stroll along a wonderful coastline. The Trail is also a cycleway and riders and their horses are welcome too.

The scenery along the trail is second to none and the wildlife will really surprise you. The flora along the path is part of a managed scientific planting area. If you are a bird lover there is much to see all year round as the migration seasons constantly change the backdrop.

www.haylingbillyheritage.org



HiRock Indoor Climbing Wall

Hi ROCK is a community climbing wall situated within The Hayling College on Hayling Island. Public sessions, every Tuesday and Wednesday from 6.30pm to 9.30pm, are a chance for experienced climbers to come along and use the wall at Hi ROCK. All climbers will receive an assessment before climbing commences on their first session, this includes belaying, lowering and tying-in. Our routes are all bottom rope belayed and have bolts for lead climbing. To lead on our routes climbers will need to supply climbing rope and 5 quickdraws. Climbers must bring another person to climb with or to belay them.

www.hi-rock.co.uk



Portsmouth Historic Dockyard

A visit to the Dockyard takes you on a journey through time, allowing you to step onboard historic ships and understand the Royal Navy, past, present and future.

Discover why the ships built and harboured at Portsmouth Historic Dockyard led the way in terms of technology and innovation and how they changed the world. Visit the Mary Rose, HMS Victory, HMS Warriors and more.

A great family day out in Portsmouth.

www.historicdockyard.co.uk



Staunton Country Park

The farm, based on the 1830s style ferme ormeé (ornamental farm), is home to many different animals, ranging from everyday farm animals like pigs, sheep, Shetland ponies, and chickens, to a selection of other animals such as llamas, a Poitou donkey and alpacas.

Let the kids loose around the farm, and interact with the furry residents of Staunton. Get closer to the animals with animal feed from the shop.

www.hants.gov.uk/thingstodo/countryparks/staunton



Royal Navy Submarine Museum

Part of the Historic Dockyard, HMS Alliance is Britain's only remaining World War II submarine.

A tour begins in the forward torpedo store, then on through the accommodation space to the control room, where experienced submariner guides demonstrate the navigation systems including diving and surfacing. The tour continues through the galley and on to the heart of the submarine, the engine room, before culminating in the aft torpedo compartment.

www.historicdockyard.co.uk



Par 3 Golf, Hayling Island

Beachlands Par 3 Pitch and Putt Golf, Hayling is a links pay and play course situated on Hayling seafront with stunning sea views overlooking the Solent. Open to the general public, everyone is welcome from beginner to the best of players. It has nine well-placed holes with excellent greens and tees all being maintained by golf professional Ray Gadd. It has a nice Club House, where there is seating inside and out, overlooking the course.

www.beachlands-par3.com



Explosion!

Part of the Historic Dockyard, the story of naval warfare is told in dramatic style at Explosion!, an interactive museum housed in the Royal Navy's former Ordnance Depot at Priddy's Hard, centred around the powder magazine designed in 1771.

In the Napoleonic Wars, this was where all Royal Navy warships including HMS Victory came to load up their guns and ammunition. The last time Priddy's Hard supplied weapons to the Royal Navy was during the Falklands War in 1982.

www.historicdockyard.co.uk



Solar Heritage

Come aboard Solar Heritage, Chichester Harbour Conservancy's solar powered catamaran and take a trip through this Area of Outstanding Natural Beauty. The engines are virtually silent so you can glide along, admire the view and get up close to many of the birds and habitats that make this place so special. There will be an experienced guide on board to help you understand the special environment of Chichester Harbour.

www.conservancy.co.uk



Emirates Spinnaker Tower

Emirates Spinnaker Tower is situated on the waterfront, within Gunwharf Quays shopping centre in Portsmouth.

Take the high speed lift to the view deck at 100 metres, where you'll experience the South Coast's most spectacular view. Discover the stories behind the view with the i-VIEW interpretation touch screens. Discover more about the tower with a guided tour available daily at 11am and 3pm.

Dare to walk across the glass floor 'Sky Walk'!

www.spinnakertower.co.uk



Oyster Boat *Terror*

Oyster boat *Terror* is a beautifully restored wooden sailing boat available for skippered trips in Chichester Harbour between May and September each year. Once used to transfer oysters ashore from larger boats in the Harbour, *Terror* is now used exclusively for leisure sailing trips.

Please visit the Oyster boat *Terror* website to find out more about her history and how to book a trip on this beautiful sailing boat.

www.oysterboatterror.org.uk



Please may I proffer my sincere thanks to each and everyone at HISC whose efforts went to laying on a fabulous sailing week at the Solo Nationals.

Though my results were mixed (and the source of some despondency to me), the event management was absolutely impeccable. May I particularly congratulate the chef, the kitchen and attentive bar staff. The food was superb and fairly priced. Your club house, a fabulous design, is seriously impressive and a lovely place to socialise.

Paul, timekeepers, flags, pin end, mark layers, and safety boats did a first class job too. So my sincere thanks to everybody on the race team as well as the shore staff; from the tally desk, to the car park directors who did such an excellent job. My thanks also to the registration volunteers and those of the local Solo fleet who helped. We were made to feel very welcome.

I should add that the week including as it did, two post-race beers, two fabulous meals, an event t-shirt and so on, represented excellent value. It was a great event.

Well done HISC and thank you again.

Graham Cranford Smith
July 2018
Solo 5755 Philomena



Hayling Island Sailing Club

Sandy Point
Hayling Island
Hampshire
UK
PO11 9SL

Tel. +44 (0)2392 463768
www.hisc.co.uk
secretary@hisc.co.uk

[haylingislandsc](https://www.instagram.com/haylingislandsc)

