



2021 UK 505 Class Euro Cup and 2021 GUL Fireball UK National & Open Championships

30 September – 3 October 2021

Hayling Island Sailing Club, Hampshire, UK

SAILING INSTRUCTIONS

The notation '[NP]' in a rule of the sailing instructions (SIs) means that a boat may not protest another boat for breaking that rule. This changes RRS 60.1(a).

1 RULES

- 1.1 The regatta will be governed by the rules as defined in *The Racing Rules of Sailing*.
- 1.2 In the 505 Class, RRS 42.3(c) is replaced by 505 Class Rule 13.1 as follows:
Except on a beat to windward, when surfing (rapidly accelerating down the face of a wave) or planing is possible, the boat's crew may pull any sail in order to initiate or maintain surfing or planing, but not more than three repeated pulls and releases of the sail may be made for each wave or gust of wind.
- 1.3 Fireball Class Rule 25 *Propulsion* will apply, together with RRS Appendix P, *Special Procedures for Rule 42, rule P5*.

2 COMMUNICATIONS WITH COMPETITORS

- 2.1 Notices to competitors will be posted on the online official notice board at:
www.hisc.co.uk/sailing/open-events/fireball-national-championship-505-eurocup/
- 2.2 Signals made ashore will be displayed from the flag masts on the club race control box.
- 2.3 [DP][NP] Boats shall not leave the shore until flag D is displayed ashore. The warning signal will be made not less than 60 minutes after flag D is displayed (30 minutes if racing inside Chichester Harbour).
- 2.4 Any change to the format or schedule of races will be posted by 18:00 on the day before it will take effect and any change to the sailing instructions will be posted at least 30 minutes before flag D is displayed (SI 2.3) on the day it will take effect.
- 2.5 [DP] While racing, except in an emergency, a boat shall not make voice or data transmissions and shall not receive voice or data communication that is not available to all boats.
- 2.6 The class flags will be:
505: Flag O
Fireball: Pennant 8

3 SCHEDULE OF RACES

- 3.1 The race schedule is as follows:

Date:	Time of 1 st warning signal & scheduled races per day:		
	Time:	505:	Fireball:

Thu 30 Sept	13:25	2	2
Fri 1 Oct	11:55	3	2
Sat 2 Oct	11:55	3	2
Sun 3 Oct	10:55	2	2

- 3.2 The warning signal for each succeeding race in a day will be made as soon as practicable after the previous race.
- 3.3 To alert boats that a race or sequence of races will begin soon, the orange starting line flag will be displayed with one sound at least two minutes before a warning signal is made.
- 3.4 On the last day of the regatta no warning signal will be made after 14:30.

4 RACING AREAS

- 4.1 Attachment A shows the location of racing areas '*Alpha*', '*Bravo*' and '*Charlie*'. Racing may also take place in Chichester Harbour.
- 4.2 The area to be used will be posted on the official notice board.
- 4.3 **Danger Area:** The entrance to Chichester Harbour is low lying and indistinct and is flanked on either side by West Pole and East Pole Sands that extend for more than a mile offshore. The West Pole and East Pole Sands merge to form Chichester Bar a little over half a mile offshore. Ebb tides in the entrance to the harbour can run at up to six knots on springs and, with a falling tide and strong winds from a southerly sector, a dangerous sea may be encountered. At certain states of the tide, it is difficult for patrol boats to operate in the area of West Pole Sands. Boats are therefore advised to follow the marked navigation channel.

5 THE COURSES

- 5.1 The diagrams in Attachment B show the courses, the course designations, the approximate angles between legs, the order in which marks are to be passed, and the side on which each mark is to be left.
- 5.2 No later than the warning signal, the race committee signal boat will display the course designation and the approximate compass bearing of the first leg.
- 5.3 To change the next leg of the course, the race committee will move the original mark (or the finishing line) to a new position.

6 MARKS

- 6.1 Marks 1, 1a, 2 and 3p will be yellow inflated cylindrical buoys.
- 6.2 Starting marks will be a race committee signal boat at the starboard end, and a boat or buoy with an orange flag at the port end.
- 6.3 Finishing marks will be a race committee boat and a boat or buoy with a blue flag.

7 THE START

- 7.1 The starting line will be between staffs displaying orange flags on the starting marks.
- 7.2 [DP][NP] Boats whose warning signal has not been made shall avoid the starting area during the starting sequence for other races.
- 7.3 A boat that does not start within four minutes after her starting signal will be scored Did Not Start without a hearing. This changes RRS A5.1 and A5.2.

8 THE FINISH

- 8.1 The finishing line will be between staffs displaying blue flags on the finishing marks.
- 8.2 The race committee may award a finishing place to a boat by pointing flag W at her with a sound. The signaled boat shall be deemed to have finished, and the score awarded shall be the position she occupied at the time of the signal. If two or more overlapped boats are signaled, they shall be scored as if they were tied. This changes RRS 28.1 and A3.

9 TIME LIMITS & TARGET TIMES

- 9.1 The time limit and target time in minutes is as follows:

<i>Time limit</i>	<i>Target time</i>	<i>Finishing window</i>
75	50	15

9.2 The Finishing Window is the time for boats to finish after the first boat sails the course and finishes. Boats failing to finish within the Finishing Window will be scored Did Not Finish. This changes RRS 35, A4 and A5.

9.3 Failure to meet the Target Time will not be grounds for redress. This changes RRS 62.1(a).

10 PENALTY SYSTEM

10.1 For the 505 class only, RRS 44.1 is changed so that the Two-Turns Penalty is replaced by the One-Turn Penalty.

10.2 For the 505 class only, RRS T1 *Post-Race Penalties*, will apply.

11 HEARING REQUESTS

11.1 The protest time limit is 90 minutes after the last boat in that class finishes the last race of the day or the race committee signals no more racing today, whichever is later. The time will be posted on the official notice board.

11.2 Hearing request forms are available at the race office.

11.3 Notices will be posted no later than 30 minutes after the protest time limit to inform competitors of hearings in which they are parties or named as witnesses, and the location where hearings will take place.

12 SCORING

12.1 Three races are required to be completed to constitute a series.

12.2 (a) When fewer than four races have been completed, a boat's series score will be the total of her race scores.

(b) When from four to seven races have been completed, a boat's series score will be the total of her race scores excluding her worst score.

(c) When eight or more races have been completed, a boat's series score will be the total of her race scores excluding her two worst scores.

12.3 To request correction of an alleged error in posted race or series results, a boat may complete a scoring enquiry form available at the race office.

13 SAFETY REGULATIONS

13.1 [DP] RRS 40.1 (*Personal Flotation Devices*) shall apply at all times while afloat.

13.2 Check-out and check-in of competitors will apply as follows:

(a) The tally control point to check-out and check-in competitors will be located at the launching area.

(b) Tallies comprise numbered rubber wristbands. Numbers will be allocated at registration, and posted on the official notice board. Tallies shall be worn visibly by all competitors, over clothing, on the right wrist, at all times while afloat.

(c) [DP][NP] Competitors shall collect the tallies before racing each day.

(d) [DP][NP] Competitors shall check-in immediately on returning to shore after racing, by returning the tallies to tally control.

Breaches of (c) or (d) of this SI will incur a standard penalty without a hearing, or a discretionary penalty after a hearing. The standard penalty will be 1 point for a first infringement, and 3 points for subsequent infringements, applied as in RRS 64.2. This changes RRS 63.1 and A5.

13.3 [DP][NP] A boat that retires from a race, or does not intend to start a race, shall notify the race committee before leaving the race area.

13.4 [DP][NP] Boats shall return to and remain in their assigned berths whilst ashore.

14 REPLACEMENT OF CREW OR EQUIPMENT

- 14.1 [DP] Substitution of competitors is not allowed without prior written approval of the race committee.
- 14.2 [DP] Substitution of damaged or lost equipment is not allowed unless authorized in writing by the race committee. Requests for substitution shall be made to the committee at the first reasonable opportunity, which may be after the race

15 EQUIPMENT & MEASUREMENT CHECKS

[DP] When instructed by a member of the race committee or technical committee, a boat shall proceed as requested to a designated area for inspection. A boat or equipment may be inspected at any time for compliance with the class rules, notice of race and sailing instructions.

16 SUPPORT TEAMS

[DP][NP] Team leaders, coaches and other support persons shall stay outside areas where boats are racing from the time of the preparatory signal for the first start until all boats have finished or retired or the race committee signals a postponement, general recall or abandonment.

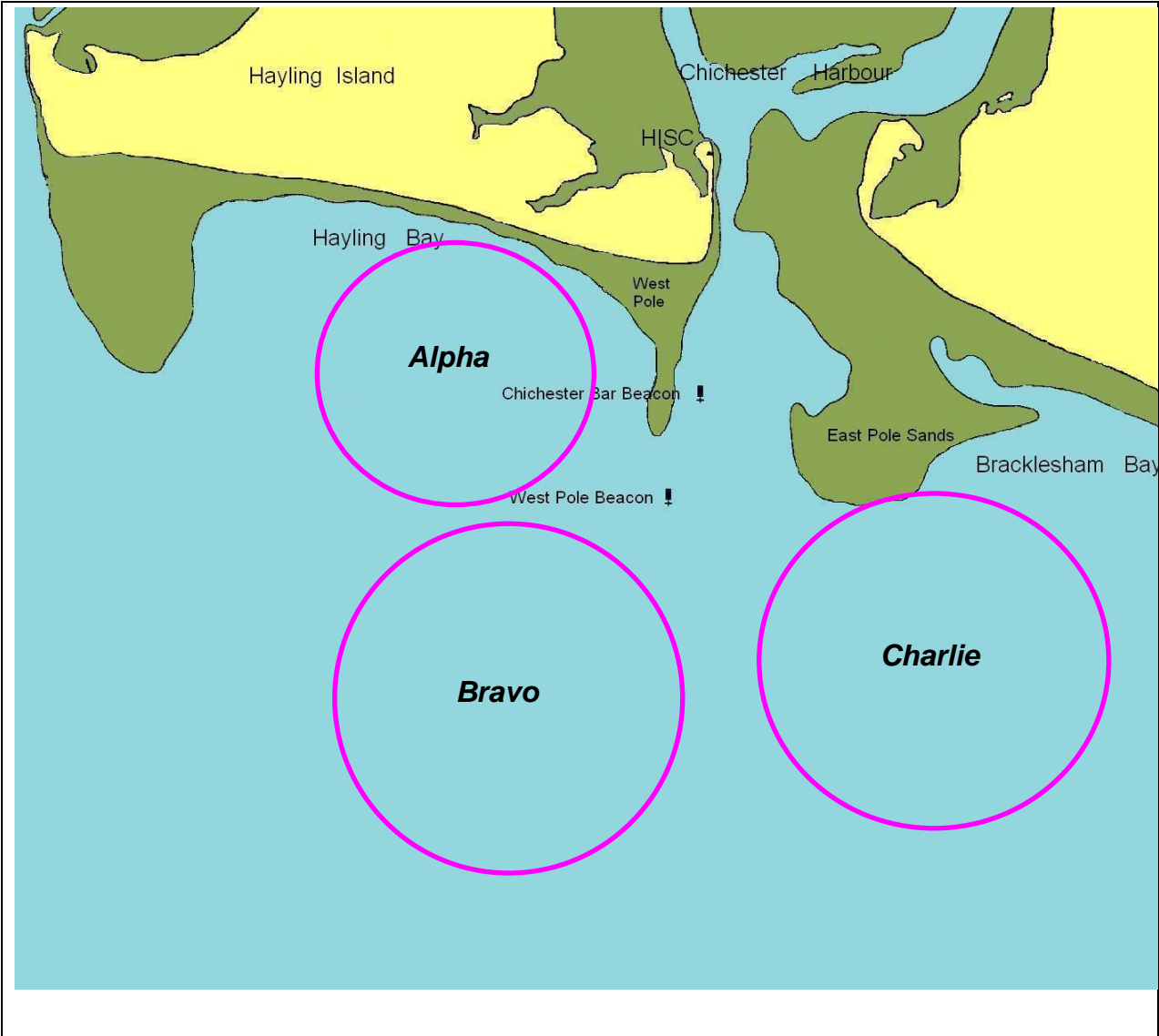
17 RISK STATEMENT

RRS 3 states: 'The responsibility for a boat's decision to participate in a race or to continue to race is hers alone.' By participating in this event each competitor agrees and acknowledges that sailing is a potentially dangerous activity with inherent risks. These risks include strong winds and rough seas, sudden changes in weather, failure of equipment, boat handling errors, poor seamanship by other boats, loss of balance on an unstable platform and fatigue resulting in increased risk of injury. Inherent in the sport of sailing is the risk of permanent, catastrophic injury or death by drowning, trauma, hypothermia or other causes.

18 INSURANCE

[DP][NP] Each participating boat shall be insured with valid third-party liability insurance with a minimum cover of £2 million per incident or the equivalent.

Attachment A
RACING AREAS



Attachment B
COURSE DIAGRAMS

Course L: Windward/Leeward with offset mark 1a

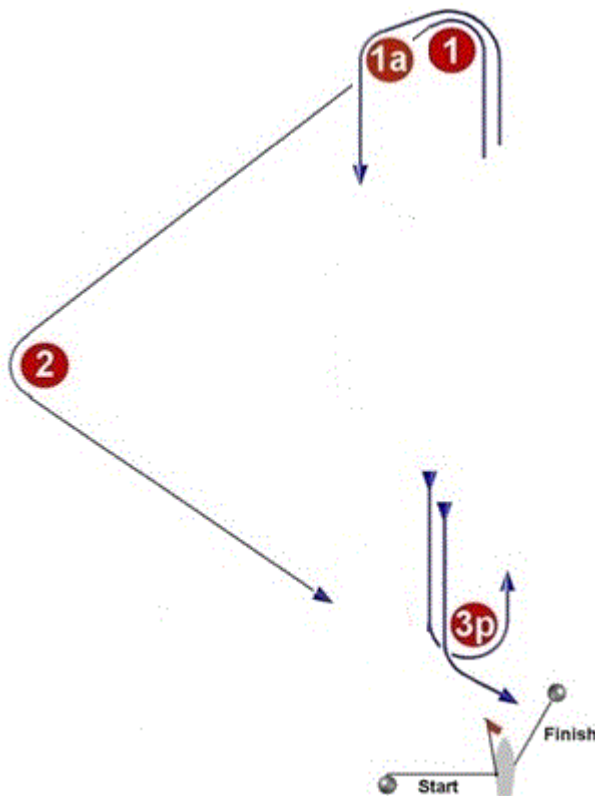


Signal: Mark rounding order:

L2 Start – 1 – 1a – 3p – 1 – 1a – 3p – Finish

L3 Start – 1 – 1a – 3p – 1 – 1a – 3p – 1 – 1a – 3p – Finish

Course LT: Windward/Leeward/Triangle
Course TL: Triangle/Windward/Leeward



Signal: Mark rounding order:

LT2 Start – 1 – 1a – 3p – 1 – 2 – 3p – Finish

LT3 Start – 1 – 1a – 3p – 1 – 2 – 3p – 1 – 1a – 3p – Finish

TL2 Start – 1 – 2 – 3p – 1 – 1a – 3p – Finish

TL3 Start – 1 – 2 – 3p – 1 – 1a – 3p – 1 – 2 – 3p – Finish