



Zhik UK 2018 29er Class National & Open Championships

and

Ovington International 29er Class Eurocup

28 July – 2 August 2018

Hayling Island Sailing Club, Hampshire, UK

SAILING INSTRUCTIONS

1 RULES

- 1.1 The regatta will be governed by the rules as defined in *The Racing Rules of Sailing*.
- 1.2 RRS Appendix P, *Special Procedures for Rule 42*, will apply, except that rule P2.3 will not apply and rule P2.2 is changed so that it will apply to any penalty after the first one.
- 1.3 RRS 44.1 and RRS P2.1 are changed so that the Two-Turns Penalty is replaced by the One-Turn Penalty
- 1.4 The notation [DP] in a rule of the NoR or SI means that the penalty for breaching the rule is at the discretion of the protest committee, and may be less than disqualification.

2 GREEN & CLEAN REGATTA

- 2.1 As sailors, we seek to protect and restore our oceans, coastal waters and shore environment.
- 2.2 [DP] Competitors shall not drop trash in the boat park or elsewhere, it may be placed in the receptacles provided.
- 2.3 Whilst afloat trash may be placed aboard safety and patrol boats.
- 2.4 The use of single trip containers is discouraged; where possible water bottles should be refilled.
- 2.5 Competitors and support persons are expected to maintain a clean and tidy boat park.
- 2.6 Toxic cleaning products should be avoided.

3 ADDITIONAL IDENTIFICATION

While racing each boat shall display, in the mainsail pocket, a coloured placard corresponding to the flight or fleet to which she has been assigned. Placards and instructions for attachment will be available from the race office.

4 COMMUNICATIONS WITH COMPETITORS

- 4.1 There will be a briefing for competitors at 10:00 on Sunday 29 July in the HISC clubhouse.
- 4.2 Notices to competitors will be posted on the official notice board, located in the race office, near the clubhouse entrance.
- 4.3 Signals made ashore will be displayed from the flag masts on the club race control box.
- 4.4 [DP] Boats shall not leave the shore until flag D is displayed ashore. The warning signal will be made not less than 60 minutes after flag D is displayed (30 minutes if racing in Chichester Harbour).
- 4.5 Any change to the sailing instructions will be posted at least 30 minutes before flag D is displayed (SI 4.4) on the day it will take effect.

4.6 The class flag will be a yellow or blue flag as follows:

Flight/Fleet: Flag colour:

Yellow / Gold Yellow

Blue / Silver Blue

5 FORMAT OF RACING

5.1 The regatta will consist of a qualifying series followed by a final series, as described below.

5.2 Qualifying Series:

- (a) For the first day of racing, boats will be assigned to flights Yellow and Blue, of, as nearly as possible, equal size and ability. The assignments will be made by the organizing authority, and will be posted by 19:00 on the day before the first scheduled race of the event.
- (b) Boats will be reassigned to flights after the first day of racing. If both flights have completed the same number of races, boats will be reassigned on the basis of their ranks in the series. If both flights have not completed the same number of races, the series scores for reassignment will be calculated for those races, numbered in order of completion, completed by both flights. Reassignments will be made as follows:

Rank in series Flight assignment

First Yellow

Second Blue

Third Blue

Fourth Yellow

Fifth Yellow

Sixth Blue

and so on.

- (c) If two or more boats have the same rank, they will be entered in the left column in the order of flights in instruction 5.2(a).
- (d) If both flights have not completed the same number of races by the end of a day, the flight with fewer races will continue racing the following day until both flights have completed the same number of races. All boats will thereafter race in the new flights.
- (e) Assignments will be based on the ranking available at 21:00 that day regardless of protests or requests for redress not yet decided.

5.3 Final Series:

- (a) Boats will be assigned to final series fleets Gold and Silver on the basis of their rank at the end of the qualifying series, with 50% assigned to the Gold Fleet, rounded up if there is an uneven number of boats. Boats with the best qualifying series ranks will race in the Gold fleet, boats with the next best qualifying series ranks will race in the Silver fleet. Boats with unbroken ties at the division point will be included in the Gold Fleet.
- (b) Any recalculation of qualifying series ranking after boats have been assigned to final series fleets will not affect the assignments except that a redress decision may promote a boat to the Gold fleet.

6 SCHEDULE

6.1 The race schedule is as follows:

29 - 30 July Qualifying series 8 races

31 July – 2 Aug Final series 11 races

- 6.2 The number of races scheduled each day, up to a maximum of five, is at the discretion of the race committee. The committee will issue a notice each day with the number of races intended.
- 6.3 The scheduled time of the warning signal for the first race on Sun 29 July is 12:00, and on other days is 11:00.
- 6.4 The warning signal for each succeeding race will be made as soon as practicable.

- 6.5 To alert boats that a race or sequence of races will begin soon, the orange starting line flag will be displayed with one sound at least two minutes before a warning signal is made.
- 6.6 On the last scheduled day of racing no warning signal will be made after 15:30.

7 RACING AREAS

- 7.1 Attachment A shows the location of racing areas 'Alpha', 'Bravo' and 'Charlie'. Racing may also take place in Chichester Harbour.
- 7.2 The area to be used will be posted on the official notice board.
- 7.3 **Danger Area:** The entrance to Chichester Harbour is low lying and indistinct and is flanked on either side by West Pole and East Pole Sands that extend for more than a mile offshore. The West Pole and East Pole Sands merge to form Chichester Bar a little over half a mile offshore. Ebb tides in the entrance to the harbour can run at up to six knots on springs and, with a falling tide and strong winds from a southerly sector, a dangerous sea may be encountered. At certain states of the tide, it is difficult for patrol boats to operate in the area of West Pole Sands. Boats are therefore advised to follow the marked navigation channel.

8 THE COURSES

- 8.1 The diagram in Attachment B show the courses, the course designations, the approximate angles between legs, the order in which marks are to be passed, and the side on which each mark is to be left.
- 8.2 The gate 2s/2p may be replaced by a single mark to be left to port.
- 8.3 No later than the warning signal, the race committee signal boat will display the course designation and the approximate compass bearing of the first leg.

9 MARKS

- 9.1 Marks 1, 2s and 2p will be yellow inflated cylinders.
- 9.2 Starting and finishing marks will be a race committee signal boat at the starboard end, and a boat or buoy at the port end.

10 THE START

- 10.1 The starting line will be between staffs displaying orange flags on the starting marks.
- 10.2 [DP] Boats whose warning signal has not been made shall avoid the starting area during the starting sequence for other races.

11 THE FINISH

- 11.1 The finishing line will be between staffs displaying blue flags on the finishing marks.
- 11.2 The race committee may award a finishing place to a boat by pointing flag W at her with a sound. The signaled boat shall be deemed to have finished, and the score awarded shall be the position she occupied at the time of the signal. If two or more overlapped boats are signaled they shall be scored as if they were tied. This changes RRS 28.1 and A3.

12 TIME LIMITS & TARGET TIMES

- 12.1 The time limit and target time in minutes is as follows:

<i>Time limit</i>	<i>Finish window</i>	<i>Target time</i>
60	15	30

Failure to meet the target time will not be grounds for redress. This changes RRS 62.1(a).

- 12.2 Boats failing to finish within the finish window time after the first boat sails the course and finishes will be scored Did Not Finish. This changes RRS 35, A4 and A5.

13 PROTESTS, PENALTIES & REQUESTS FOR REDRESS

- 13.1 Protest forms are available at the race office. Protests and requests for redress or reopening shall be delivered there within the appropriate time limit.
- 13.2 The protest time limit is 90 minutes after the last boat has finished the last race of the day or the race committee signals no more racing today, whichever is the later.

- 13.3 Notices will be posted no later than 30 minutes after the protest time limit to inform competitors of hearings in which they are parties or named as witnesses.
- 13.4 Notices of protests by the race committee, technical committee or protest committee will be posted to inform boats under RRS 61.1(b).
- 13.5 A list of boats that, under SI 1.2, have been penalized for breaking RRS 42 will be posted.
- 13.6 Penalties for breaches of class rules, RRS 55 or rules in the NoR and SIs marked [DP], are at the discretion of the protest committee.
- 13.7 Breaches of SI 15, Safety Regulations and SI 20, Support Boats, will not be grounds for protest by a boat. This changes RRS 60.1(a).
- 13.8 On the last scheduled day of racing, a request for redress based on a protest committee decision shall be delivered no later than 30 minutes after the decision was posted. This changes RRS 62.2.

14 SCORING

- 14.1 One race is required to be completed by all fleets to constitute a regatta.
- 14.2 Four races are required to be completed by each fleet to constitute a qualifying series. If four races are not completed as scheduled, the qualifying series will be extended to complete them.
- 14.3 If at the end of the qualifying series some boats have more race scores than others, scores for the most recent races will be excluded so that all boats have the same number of race scores.
- 14.4 For the qualifying series, RRS A4.2 is changed so that the scores are based on the number of boats assigned to the largest fleet.
- 14.5 Each final series fleet will be scored separately. Different final series fleets need not have completed the same number of final races. The boats in the Gold Fleet will be ranked highest in the Championships.
- 14.6 Series scores (apply separately to qualifying and final series):
 - (a) When fewer than four races have been completed, a boat's series score will be the total of her race scores.
 - (b) When from four to seven races have been completed, a boat's series score will be the total of her race scores excluding her worst score.
 - (c) When eight or more races have been completed, a boat's series score will be the total of her race scores excluding her two worst scores.
- 14.7 Except for race scores excluded under SIs 14.3 and 14.6, a boat's championship score will be the total of her race scores from her final series races plus points equal to her qualifying-series rank.
- 14.8 A boat starting later than 4 minutes after her starting signal will be scored Did Not Start. This changes RRS A4 and A5.
- 14.9 To request correction of an alleged error in posted race or series results, a boat may complete a scoring enquiry form available at the race office.

15 SAFETY REGULATIONS

- 15.1 [DP] Competitors shall wear personal flotation devices at all times while afloat, except briefly while adjusting clothing or personal equipment.
- 15.2 Check-out and check-in of competitors will apply as follows:
 - (a) The tally control point to check-out and check-in competitors will be located at the race office.
 - (b) Tallies comprise numbered rubber wristbands. Numbers will be allocated at registration, and posted on the official notice board. Tallies shall be worn visibly by all competitors, over clothing, on the right wrist, at all times while afloat.
 - (c) [DP] Competitors shall check-out before racing by collecting their tallies.

- (d) [DP] Competitors shall check-in immediately on returning to shore after racing, by returning the tallies to tally control.
- (e) The race committee may apply a standard penalty without a hearing for a breach of (c) or (d) of this SI. The penalty will be 3 points added to the boat's series score. This changes RRS 63.1 and A5.

15.3 [DP] A boat that retires from a race, or does not intend to start a race, shall notify the race committee as soon as possible.

15.4 [DP] In accordance with NoR 13, boats shall return to and remain in their assigned berths whilst ashore.

16 REPLACEMENT OF CREW OR EQUIPMENT

16.1 [DP] Substitution of competitors, including swapping of helm/crew positions, will not be allowed without prior written approval of the race committee. When substitution of competitors is approved the boat will be counted as a new entry, and if the substitution is approved during the final series the boat will be assigned to the silver fleet for all remaining final series races.

16.2 [DP] Substitution of damaged or lost equipment will not be allowed unless authorized by the race committee. Requests for substitution shall be made to the committee at the first reasonable opportunity.

17 EQUIPMENT & MEASUREMENT CHECKS

On the water, a boat can be instructed by a member of the race committee or technical committee to proceed immediately to a designated area for inspection. Equipment may be inspected at any time in accordance with NoR 7.6.

18 ADVERTISING & BOW NUMBERS

Boats shall display the advertising supplied by the organizing authority on both side of the forward 25% of the hull.

19 OFFICIAL BOATS

19.1 Patrol boats will display red, blue or yellow flags with a numeral.

19.2 Protest committee, technical committee and media boats will display identification.

20 SUPPORT BOATS

20.1 [DP] All support boat crews shall attend the scheduled safety boat briefings.

20.2 To ensure fairness to all competitors, support boats may be required to carry drinks, snacks and spares for competitors who do not have their own support boat.

20.3 When the circumstances require it, the race committee may call upon support boats to assist with safety duties by displaying flag V on the race committee boat and requesting assistance on the designated VHF channel. The VHF channel will be provided at the safety briefings.

20.4 [DP] All support boats shall display an identification flag, provided by the organizing authority.

20.5 [DP] Kill cords shall be worn whilst engines are running. The penalty for breaching this instruction will be the support boat and her crew being barred from the racing area for the remainder of the event.

20.6 [DP] Personal flotation devices shall be worn by support persons at all times whilst afloat, except briefly while changing or adjusting personal clothing. The penalty for breaching this instruction will be the support boat and her crew being barred from the racing area for the remainder of the event.

20.7 [DP] Support persons shall stay outside areas where boats are racing from the time of the preparatory signal for the first flight or fleet to start until all boats have finished or retired or the race committee signals a postponement, general recall or abandonment.

20.8 [DP] Each support boat shall be adequately insured, with cover of at least £2 million against third-party claims, or the equivalent in other currencies.

21 RADIO COMMUNICATION

[DP] Except in an emergency, a boat that is racing shall not make voice or data transmissions and shall not receive voice or data communication that is not available to all boats.

22 PRIZES

The prizes to be awarded are listed in the Notice of Race.

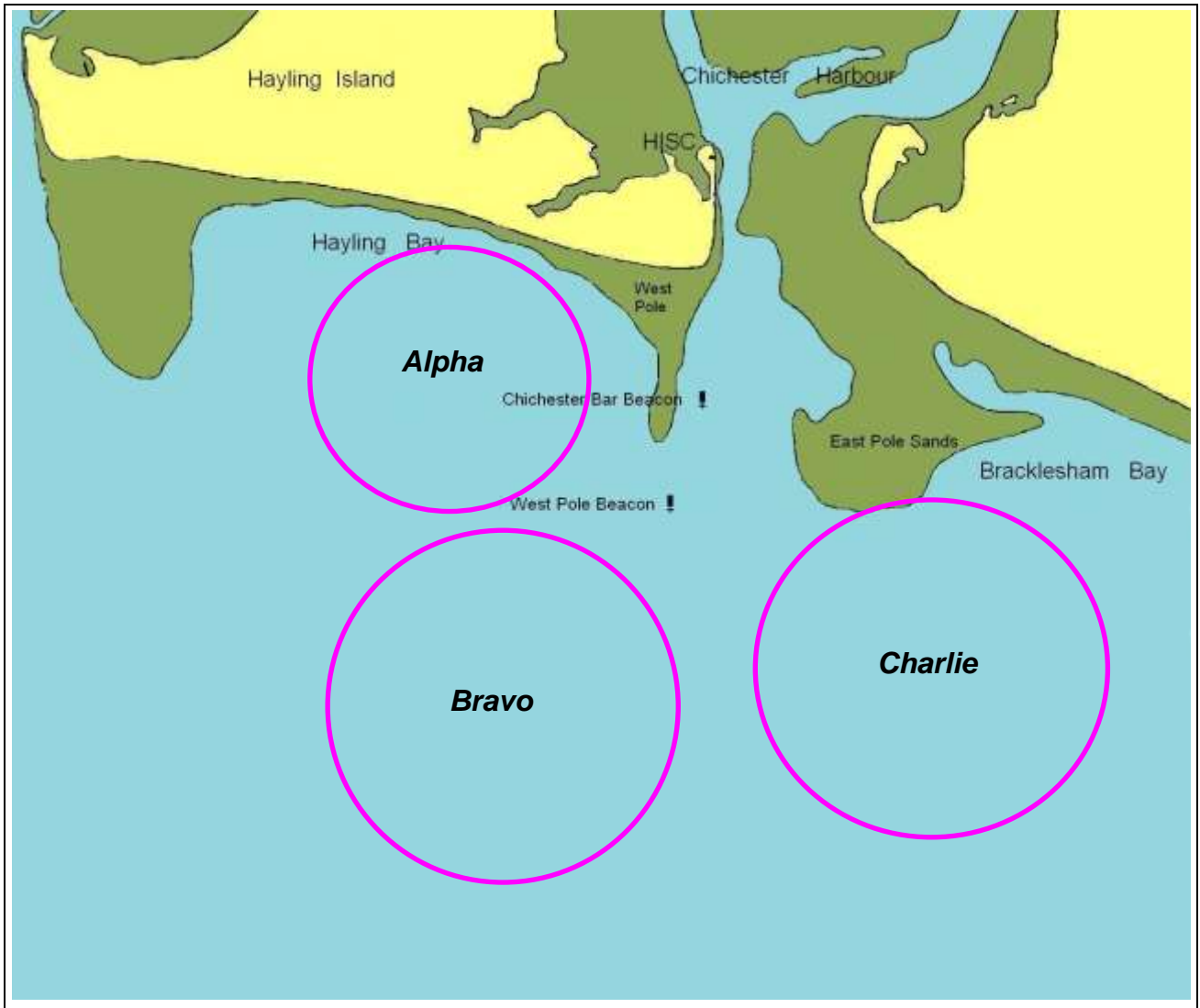
23 RISK STATEMENT

23.1 Rule 4 of the Racing Rules of Sailing states: "The responsibility for a boat's decision to participate in a race or to continue racing is hers alone."

23.2 Sailing is by its nature an unpredictable sport and therefore inherently involves an element of risk. By taking part in the event, each competitor agrees and acknowledges that:

- (a) They are aware of the inherent element of risk involved in the sport and accept responsibility for the exposure of themselves, their crew and their boat to such inherent risk whilst taking part in the event;
- (b) They are responsible for the safety of themselves, their crew, their boat and their other property whether afloat or ashore;
- (c) They accept responsibility for any injury, damage or loss to the extent caused by their own actions or omission;
- (d) Their boat is in good order, equipped to sail in the event and they are fit to participate;
- (e) The provision of a race management team, patrol boats and other officials and volunteers by the event organizer does not relieve them of their own responsibilities;
- (f) The provision of patrol boat cover is limited to such assistance, particularly in extreme weather conditions, as can be practically provided in the circumstances.
- (g) It is their responsibility to familiarize themselves with any risks specific to this venue or this event drawn to their attention in any rules and information produced for the venue or event and to attend any safety briefing held for the event.
- (h) Their boat is adequately insured, with cover of at least £2 million against third-party claims, or the equivalent in other currencies.

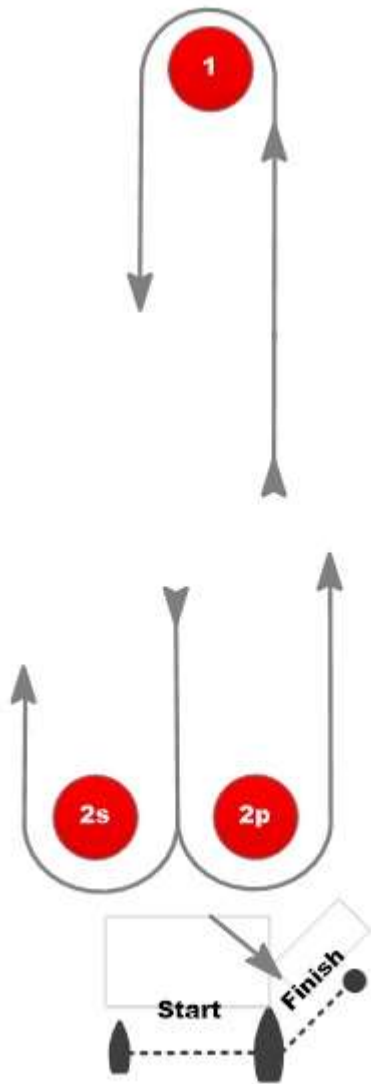
Attachment A
RACING AREAS



Attachment B

COURSE DIAGRAMS

WINDWARD - LEEWARD



Signal: Mark rounding order:

L2 Start - 1 - 2s/2p - 1 - 2p - Finish

L3 Start - 1 - 2s/2p - 1 - 2s/2p - 1 - 2p - Finish