

MAGIC MARINE OPTIMIST & TERA ROUND HAYLING ISLAND RACE

24TH AUGUST 2025





INFORMATION

NOTICE BOARD
SAFETY LIST
SCHEDULE



COURSES

BRIDGE ADVENTURE
ROUND ISLAND
PORTAGE



NAVIGATION

EXPECTATIONS
HARBOURS & BAY
TIDAL EXPECTATIONS



HOW TO GET INVOLVED

VOLUNTEERING
SPECTATING



INFORMATION

NOTICE BOARD

THIS PACK INCLUDES SUPPLEMENTARY INFORMATION ABOUT THE EVENT TO AID ORIENTATION; HOWEVER, THIS INFORMATION IS ALL SUPERSEDED BY THE OFFICIAL NOTICE BOARD. THE OFFICE NOTICE BOARD HOLDS THE FOLLOWING DOCUMENTS:

- NOTICE OF RACE
 - AMENDMENT NO1 – COACHING PROVISION
 - AMENDMENT NO2 – ADDITION OF TERAS
- SAILING INSTRUCTIONS
- EVENT SCHEDULE
- ENTRY LIST

[HTTPS://SAILEVENT.NET/NOTICEBOARD/19G](https://sailevent.net/noticeboard/19G)

PROTEST & REDRESS FORMS CAN BE FOUND AT HISC RECEPTION AS REQUIRED

SAFETY LIST

OPTIMISTS:

- 8M TOW LINE (BOWLINE IN THE END, NO OTHER KNOTS)
- PADDLE & 2 BAILERS (TIED ON)
- BUOYANCY CERTIFICATE
- DAGGERBOARD TIED ON

TERAS:

- 8M TOW LINE ATTACHED TO THE MAST AND RUNNING THROUGH THE FRONT HANDLE (BOWLINE IN THE END)
- DAGGERBOARD TIED ON

ALL SAILORS:

- BUOYANCY AIDS
- WHISTLE
- APPROPRIATE CLOTHING (LAYERS)
- FOOTWEAR (FOR THE PORTAGE – SHARP OBJECTS ON LANDING)
- FOOD & WATER
- TALLY BAND (ISSUED ON THE BEACH)
- GPS TRACKER (ISSUED AT REGISTRATION)

FAILURE TO HAVE ANY OF THE APPROPRIATE SAFETY EQUIPMENT PUTS THE SAILOR AT **RISK**

IT'S **YOUR RESPONSIBILITY** TO ENSURE THIS CORRECT – IF IN DOUBT, PLEASE ASK ANY OF THE EVENT TEAM

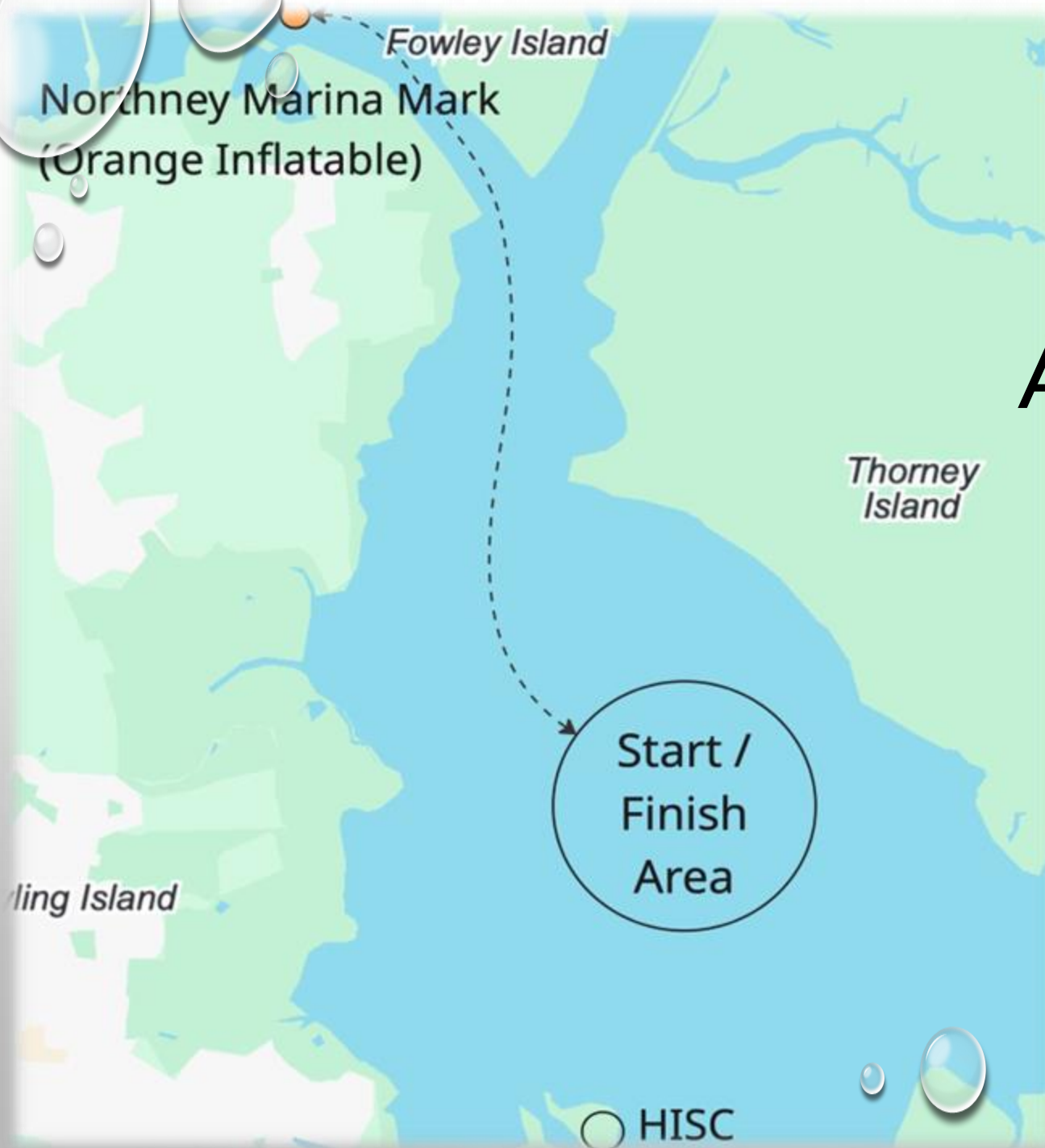
EVENT SCHEDULE

(EXPECTED TIMING - SUBJECT TO CHANGE – SEE OFFICIAL NOTICE BOARD)

- 8–10AM REGISTRATION
- 10:15AM COMPETITOR BRIEFING
- 11:10AM D FLAG (LAUNCH)
- 11:30AM FIRST WARNING
- 1:15PM HIGH WATER 4.8M (HARBOUR ENTRANCE)
- 1-3PM FINISHERS OF BRIDGE RACE
- 3-5PM FINISHERS OF ROUND ISLAND RACE
- 6:30PM PRIZE GIVING

COURSES





BRIDGE ADVENTURE

- START/FINISH PILSEY
- MARK (LARGE ORANGE INFLATABLE)

ISLAND ROUNDING



- START PILSEY
- 1ST MARK (LARGE ORANGE INFLATABLE) AT NORTHNEY MARINA
- LAND AT LANGSTONE SAILING CLUB
- LAUNCH FROM LANGSTONE SAILING CLUB
- EXIT TO LANGSTONE HARBOUR VIA HAYLING BILLY BRIDGE
- 2ND MARK (LARGE ORANGE INFLATABLE) AT EAST WINNER BANK
- FINISH BETWEEN BAR BEACON AND WEST POLE

PORTAGE



ASSISTED PORTAGE WILL BE OCCURRING AT LANGSTONE SAILING CLUB. WE HAVE BEEN PERMITTED TO LAND ON THE EAST SLIPWAY AND LAUNCH ON THE WEST.

FEEL FREE TO USE LANGSTONE SAILING CLUB'S FACILITIES INCLUDING THE TOILETS AND BAR FOR REFRESHMENTS.

SAILORS ARE UNDER NO TIME PRESSURES TO MOVE THROUGH THE PORTAGE, A SMALL AREA WILL BE MADE AVAILABLE TO TEMPORARILY STORE YOUR BOAT TO USE THE CLUB

THE RACE CLOCK STOPS BETWEEN NORTHNEY MARINA AND HAYLING BILLY BRIDGE.

THE TIDE WILL BE FALLING, AND THE NUMBER OF TROLLEYS AVAILABLE WILL BE LIMITED. PLEASE MOVE THROUGH THIS STAGE SWIFTLY.

FOOTWEAR IS REQUIRED FOR LANDING, CROSSING THE ROAD AND LAUNCHING.

WE HAVE A TEAM OF VOLUNTEERS THAT WILL BE ONSITE WITH TROLLEYS FOR TERAS AND OPTIMISTS TO ASSIST ALL SAILORS THROUGH THIS PART OF THE RACECOURSE.

NO SAIL BOATS ARE PERMITTED TO SAIL UNDER THE BRIDGE. THERE ARE CURRENTLY HANGING LINES THAT MAKE THIS DANGEROUS

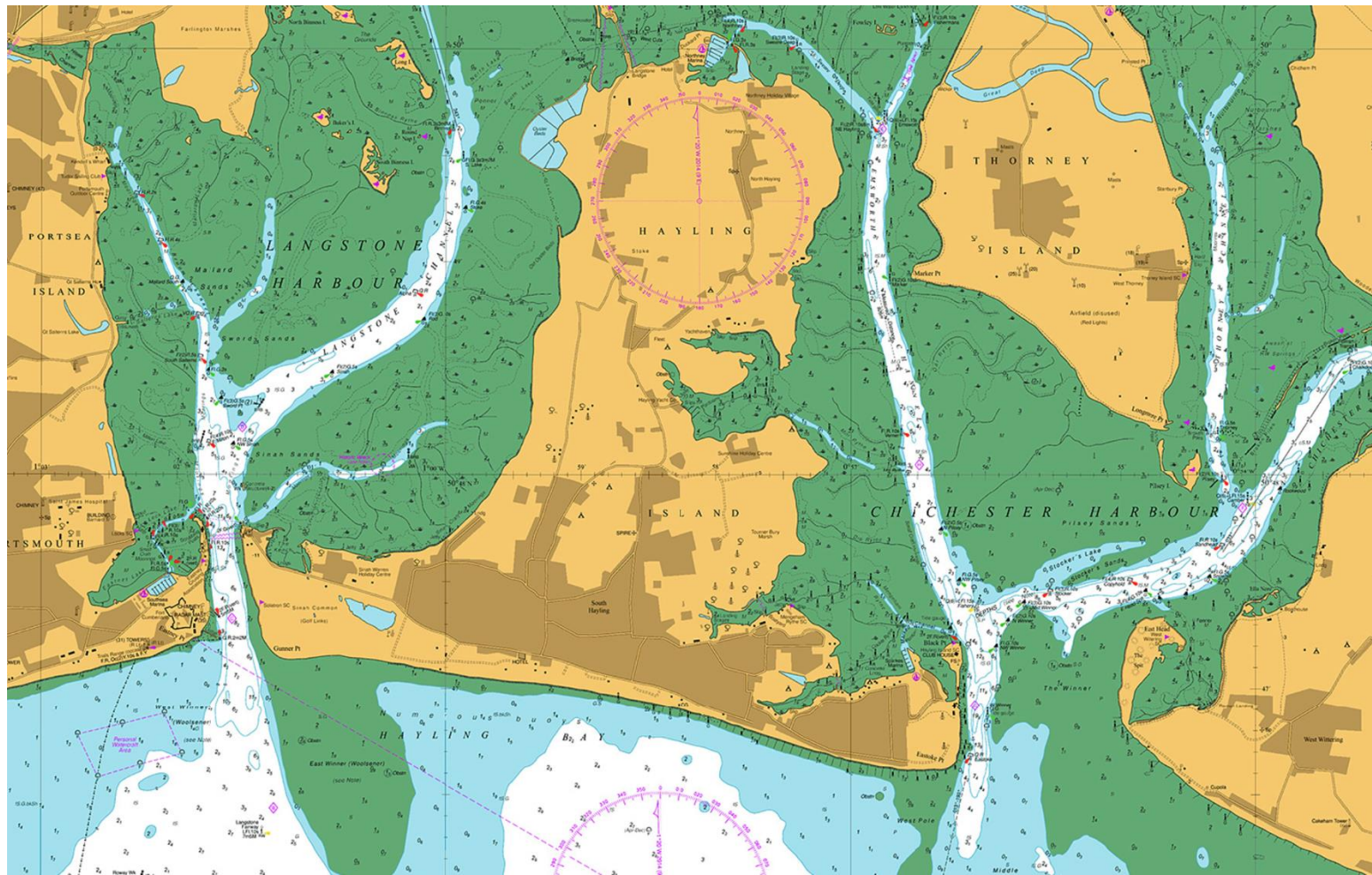
The background is a light gray surface with several realistic water droplets of various sizes scattered across it. A single pushpin is pinned to the surface, its head visible at the top and its shaft extending downwards. The word "NAVIGATION" is centered in the middle of the image.

NAVIGATION

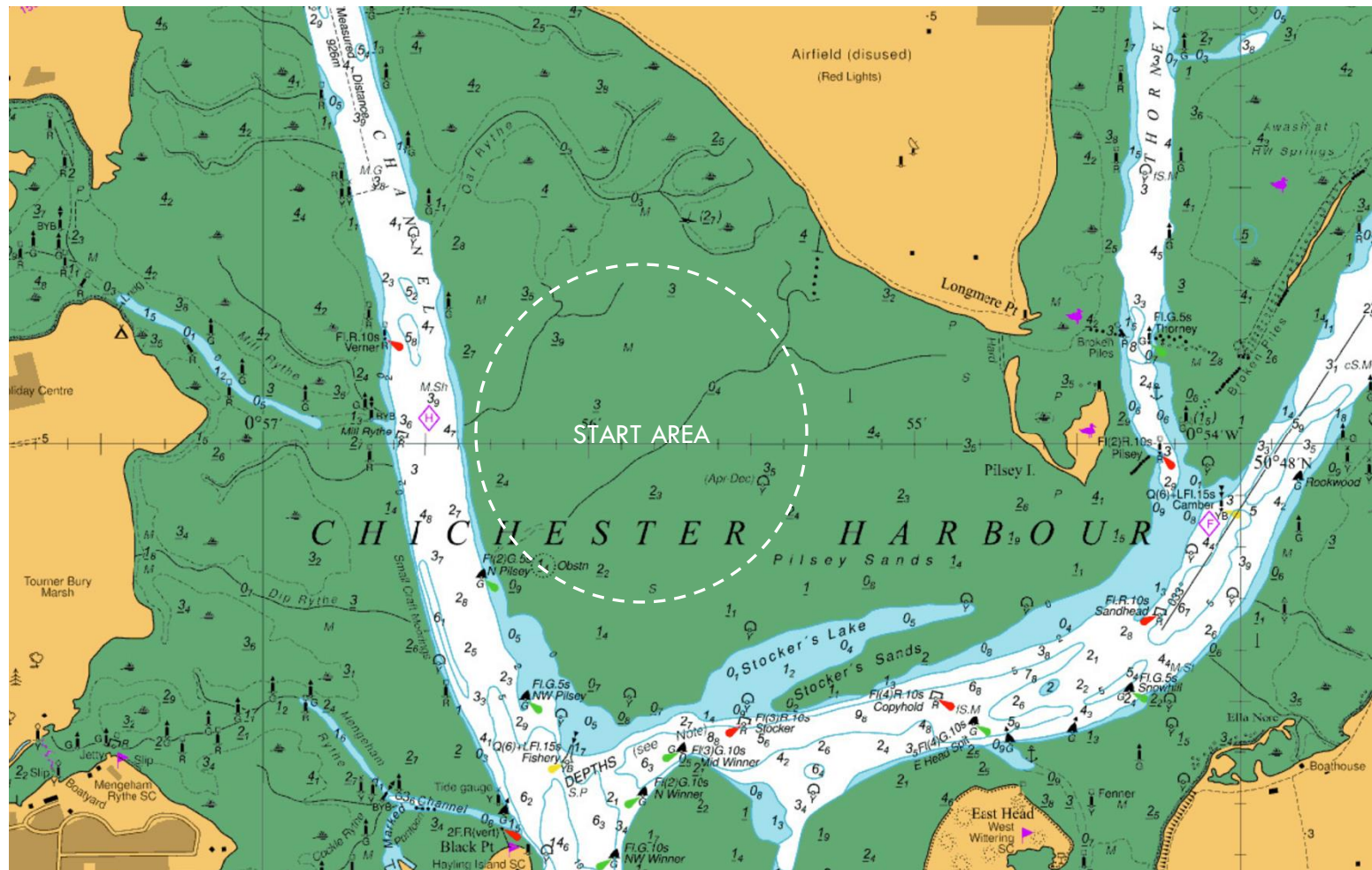
EXPECTATIONS

- SAILORS ARE **EXPECTED TO PERFORM NAVIGATION** THEMSELVES
- THERE WILL BE **NO SAFETY BOAT TO FOLLOW**, HOWEVER SAFETY BOATS WILL ESCORT THE LEAD BOATS
- **SAILORS MAY HAIL** ANY SAFETY CRAFT TO ASK **NAVIGATIONAL** OR **DEPTH QUERIES** (SI 19.5)
- THE CHANNELS (DEEP WATER) WILL HAVE FASTER FLOWING WATER, STAY IN THEM IF THEY ARE GOING IN YOUR DIRECTION
- EXITING FROM LANGSTONE HARBOUR INVOLVES VERY DEEP FAST FLOWING WATER WHICH CAN CREATE A FEW HUNDRED METERS OF LUMPY AND CONFUSED WATER. YOU WILL QUICKLY BE CARRIED PAST THIS AND BACK TO NORMAL WATERS
- IF YOU **RUN AGROUND**, ACT **CALMLY** AND **SWIFTLY** TO GET YOURSELF BACK AFLOAT
- IF YOU **CAPSIZE**, RIGHT YOUR BOAT, BAIL IT IF NEED BE, AND **CONTINUE YOUR RACE**
- IF YOU GET IN **ANY TROUBLE**, **STAY WITH YOUR BOAT** – ALL SAILORS ARE TRACKED, AND SAFETY WILL HAVE EYES ON YOU
- BE PREPARE TO BE TOWED BACK IN. HAVE YOUR TOWROPE ATTACHED, WITH A BOWLINE IN THE VERY END.
- **SAFETY CRAFT WILL HAIL** BOATS TO AVOID **DANGER/HAZARDS**
- ALL RACE MARKS ARE LARGE ORANGE INFLATABLES

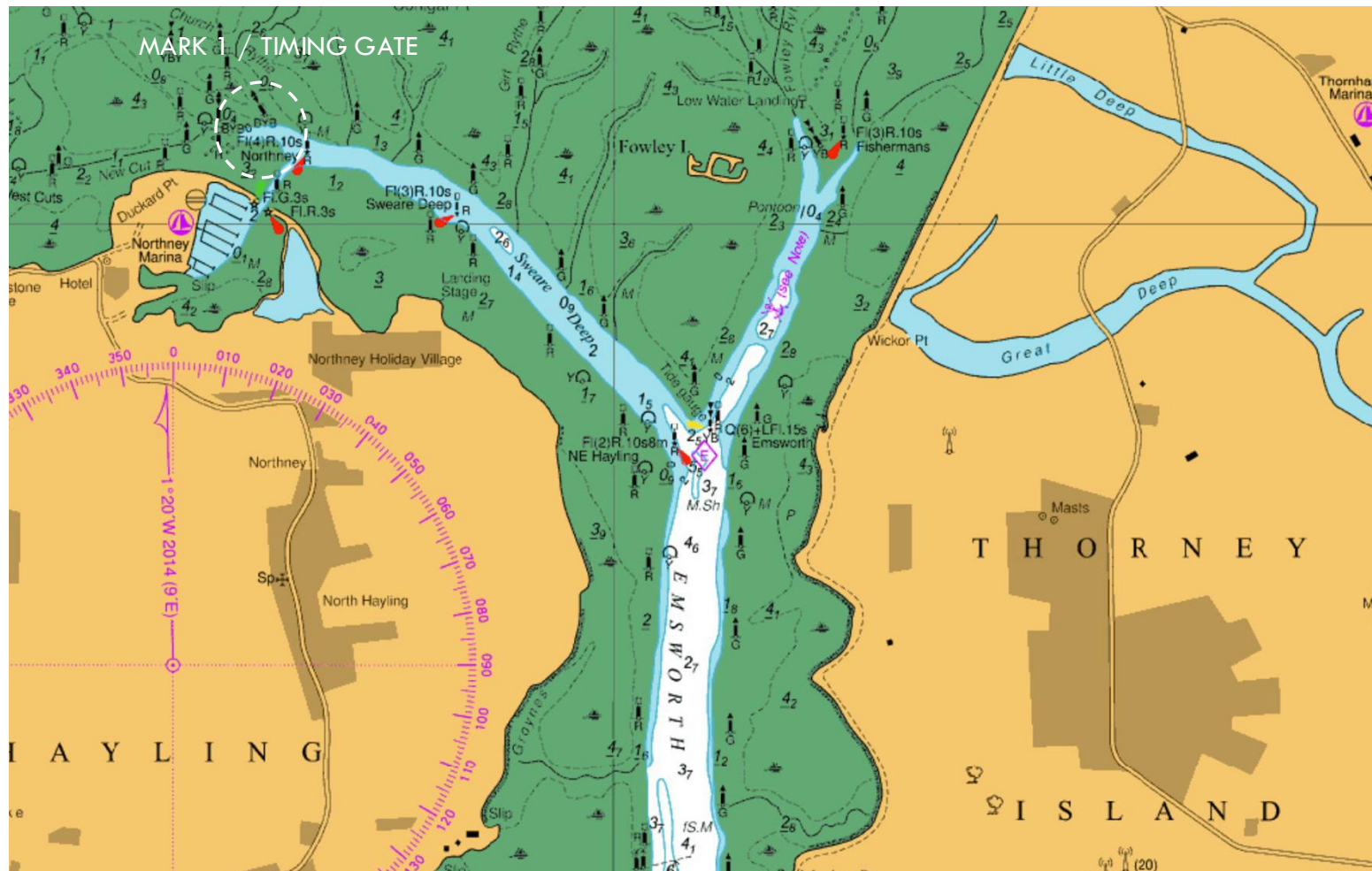
HAYLING ISLAND



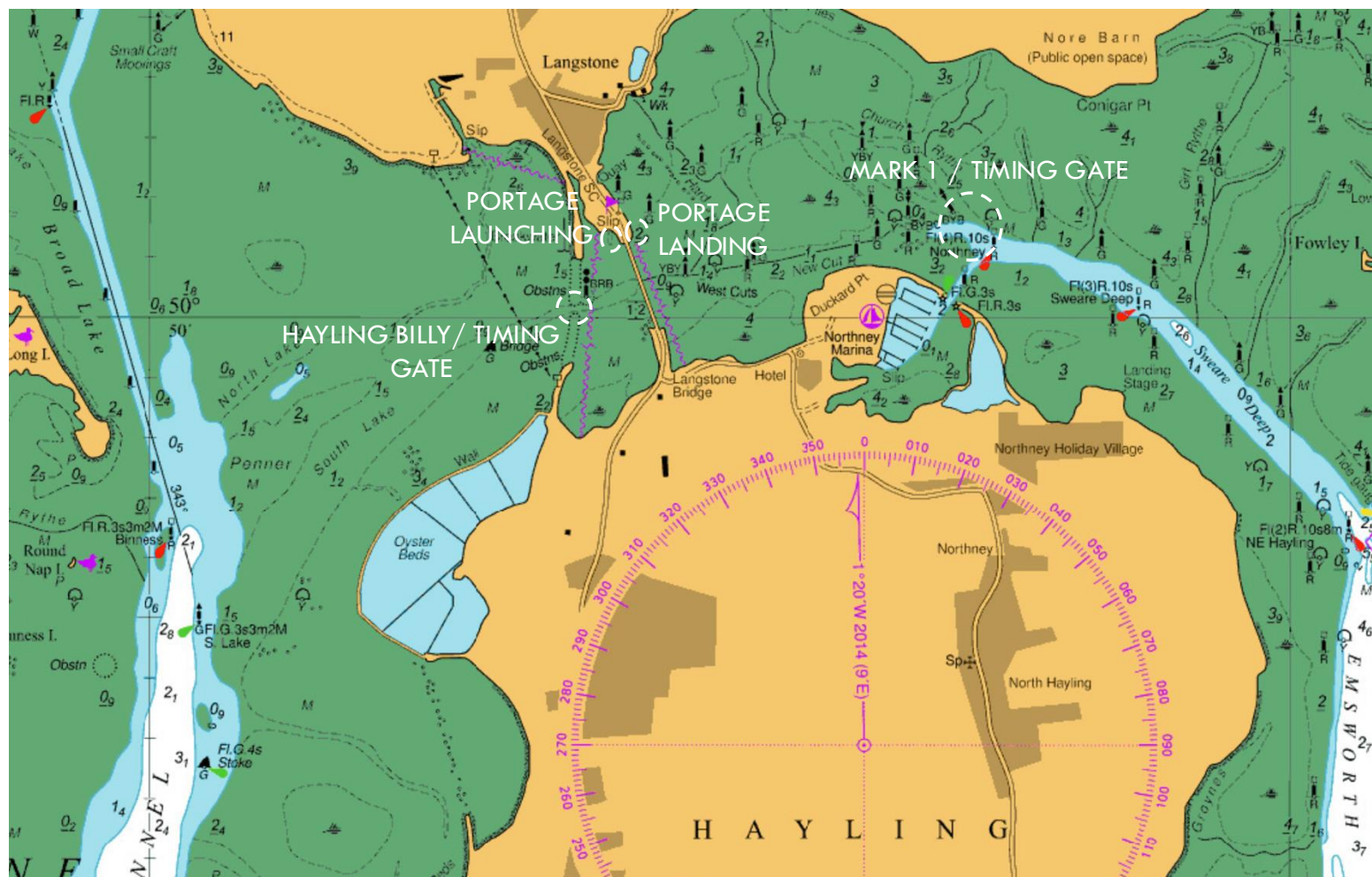
PILSEY



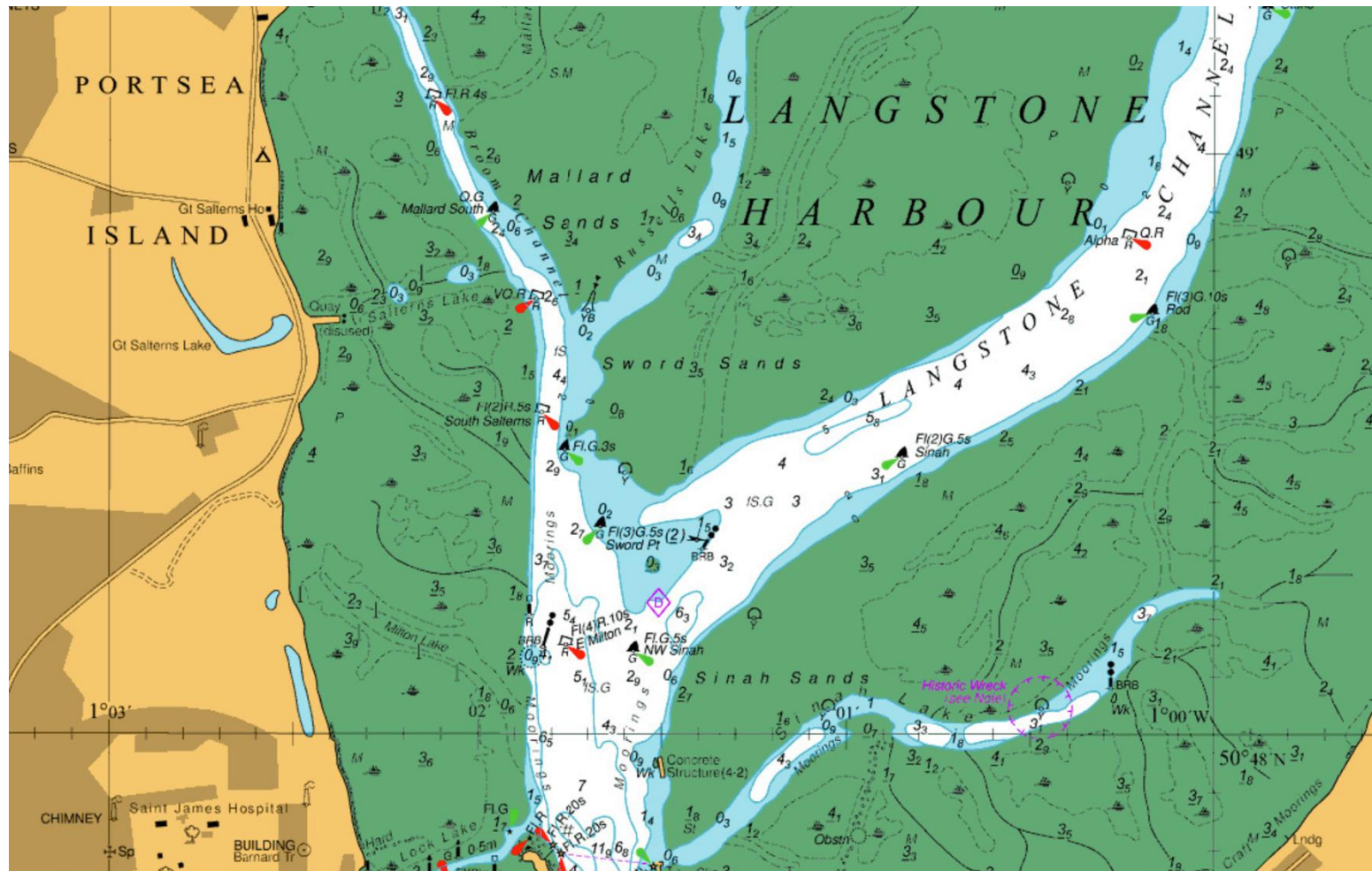
NORTHNEY MARINA



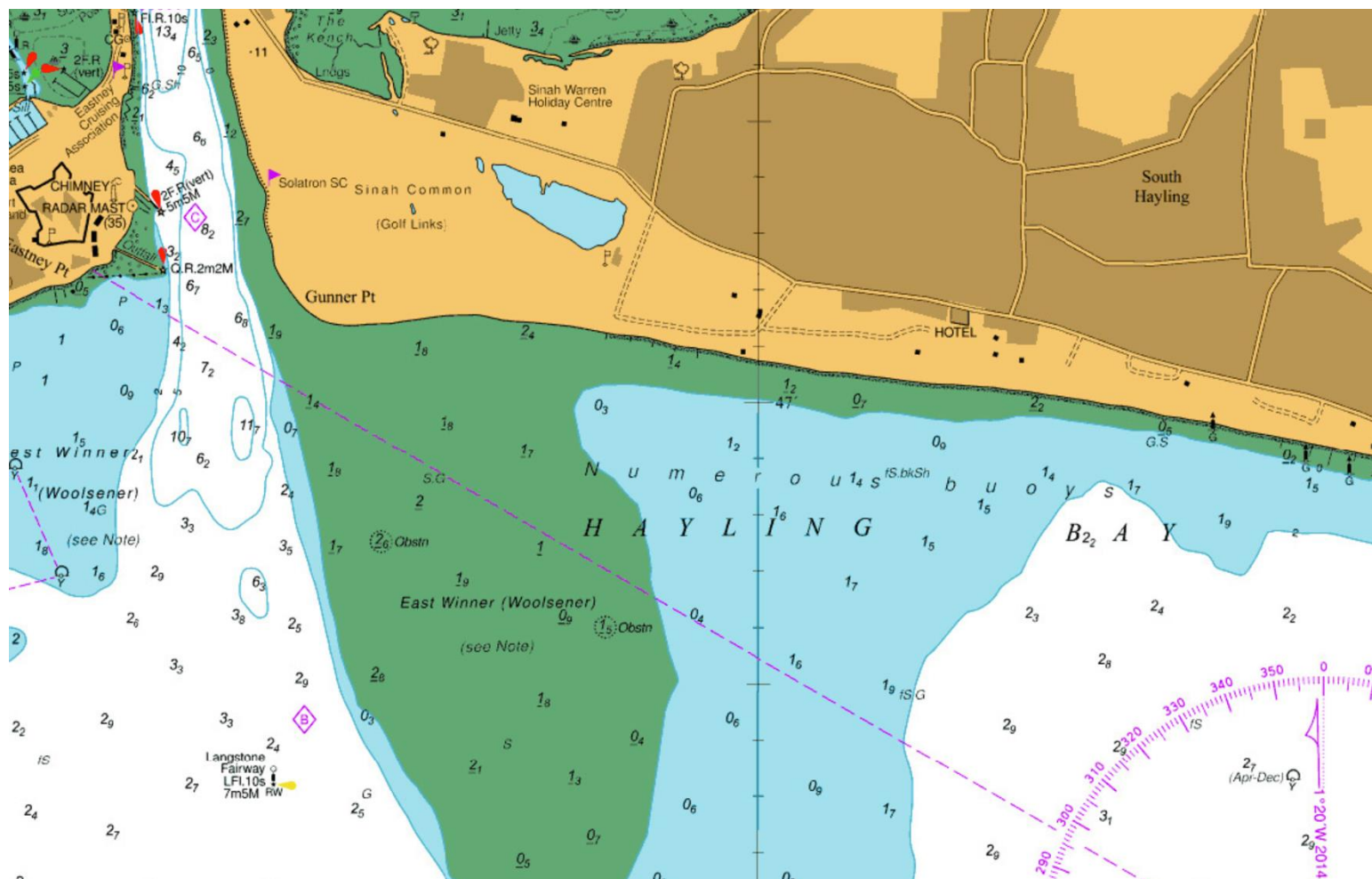
LANGSTONE SAILING CLUB



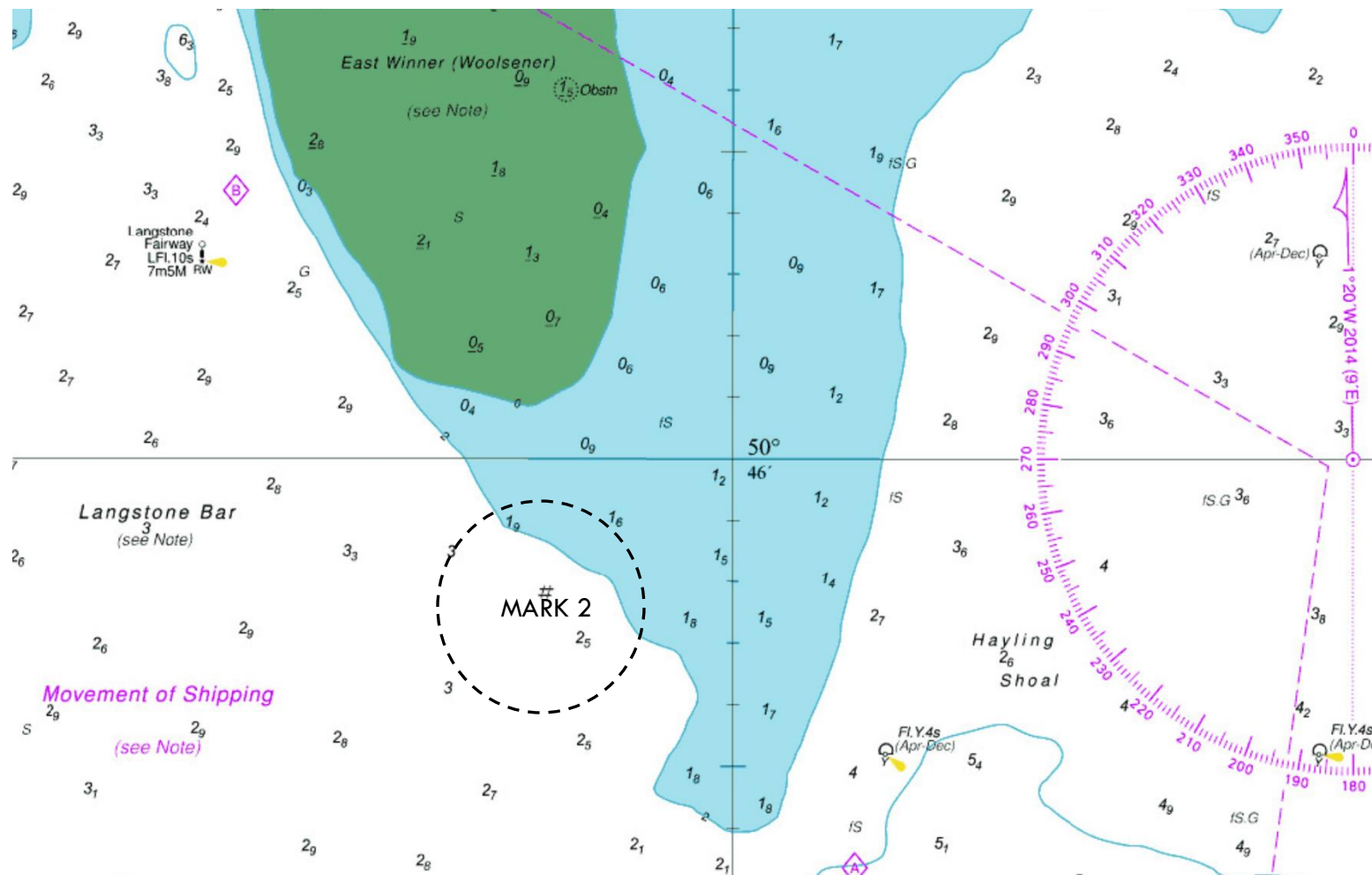
LANGSTONE HARBOUR



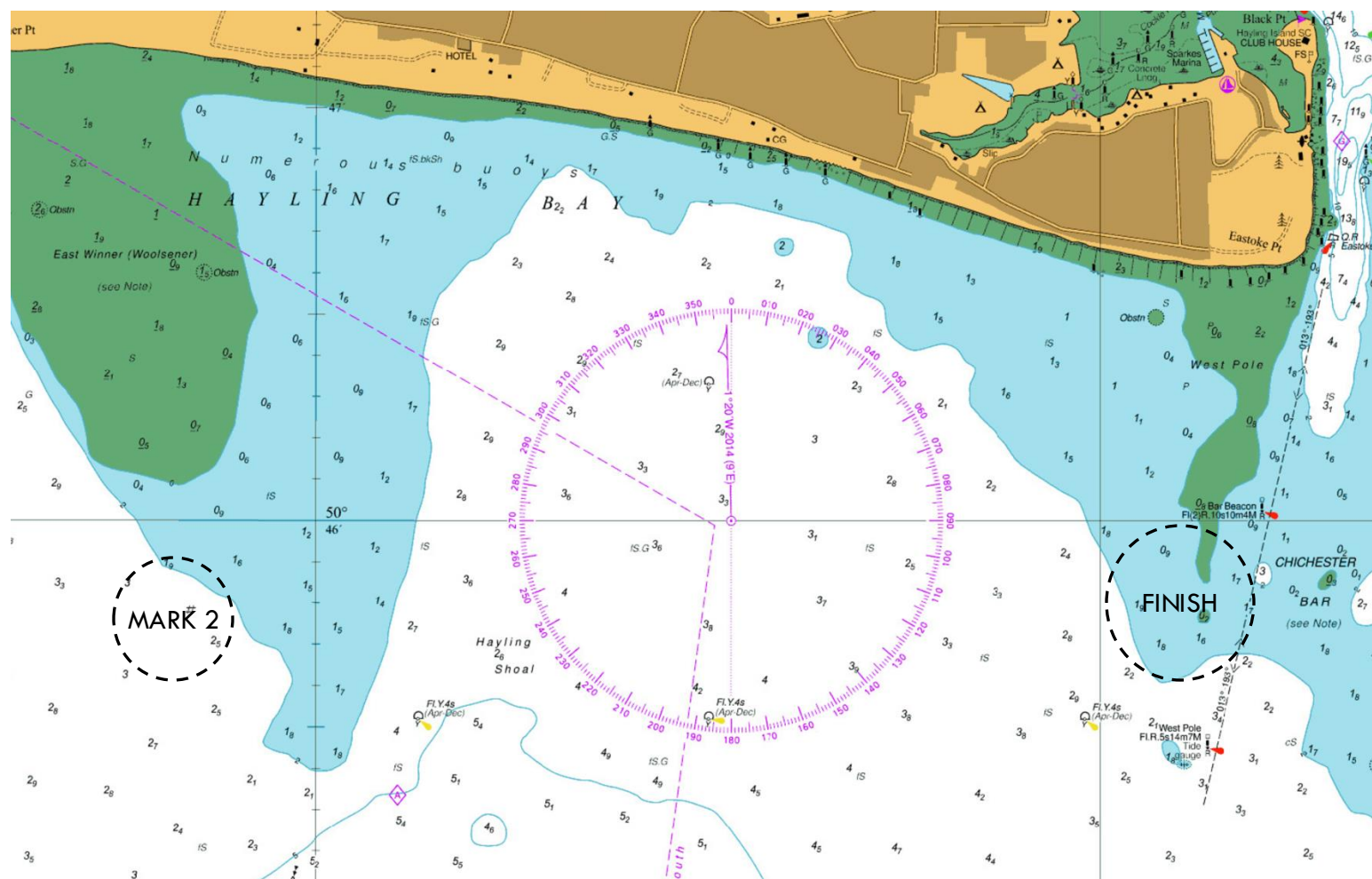
LANGSTONE ENTRANCE



EAST WINNER BANK

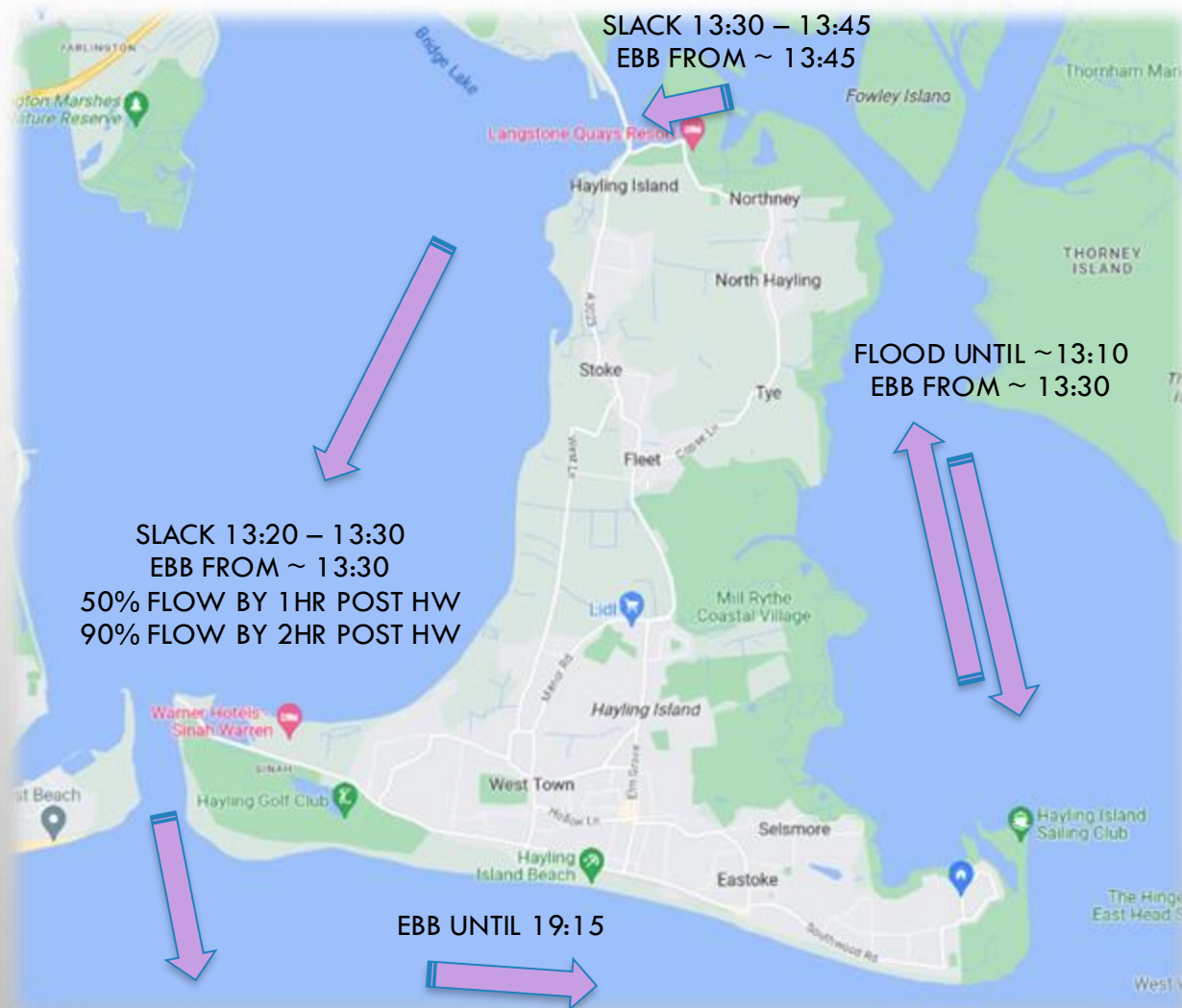


HAYLING BAY



TIDAL EXPECTATION GUIDE

(BASED ON EXPERIENCE = EXACT TIMING UNKNOWN)



HIGH TIDE 13:15 - HEIGHT 4.8M – HARBOUR ENTRANCES

HOW TO GET INVOLVED



VOLUNTEERING

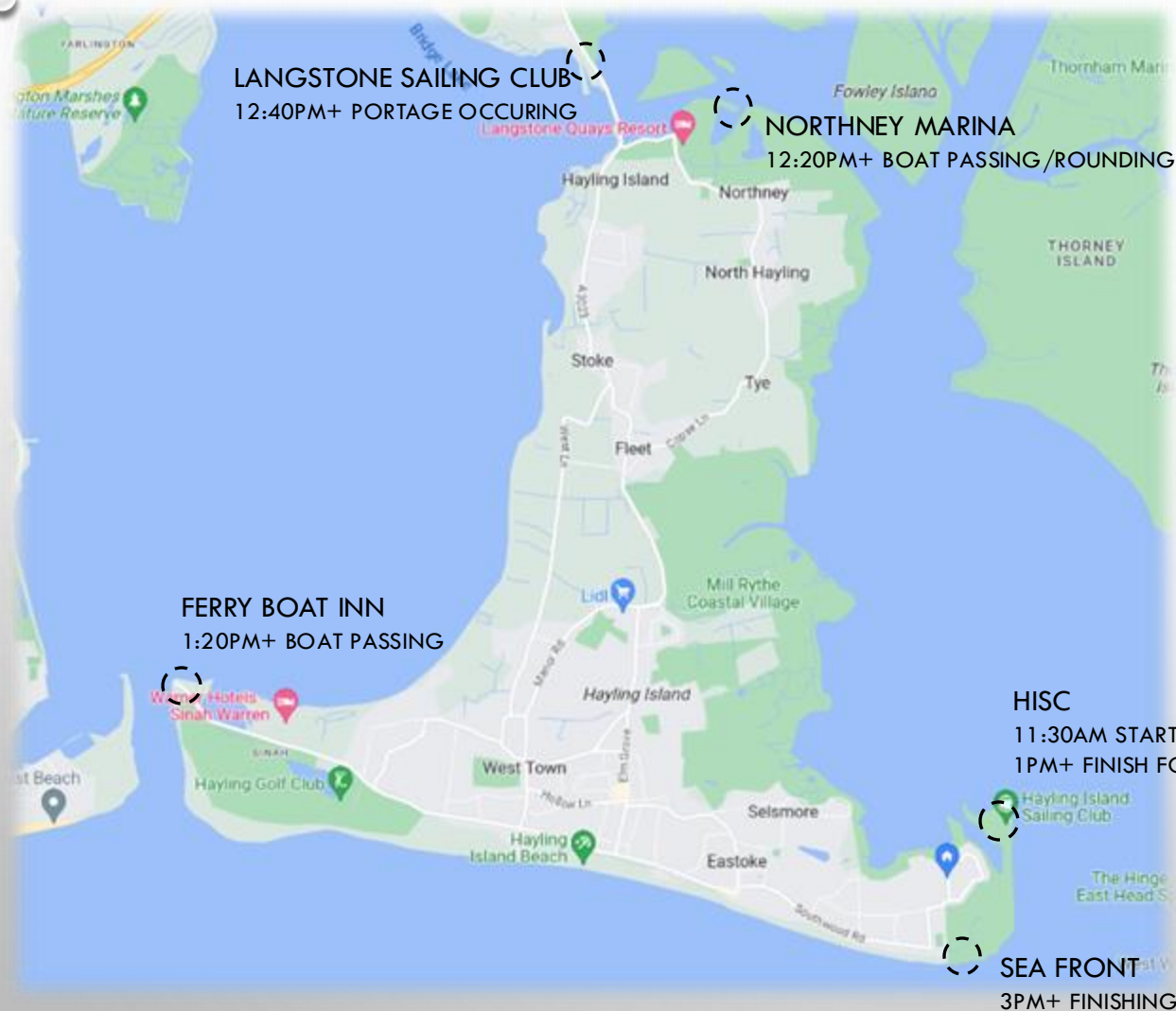
THE SUCCESS OF EVENTS LIKE THIS ARE SOLELY BASED ON THE EFFORTS OF INDIVIDUALS VOLUNTEERING THEIR TIME TO SUPPORT THEM. THIS EVENT HAS NO CLUB DUTIES BEING ALLOCATED, AND NO ONE WITHIN THE EVENT TEAM BEING PAID FOR THEIR CONTRIBUTIONS.

MANY THANKS TO EVERYONE WHO HAS SIGNED UP AND SPECIAL THANKS TO THE HUGE AMOUNT OF EFFORT FROM KEY INDIVIDUALS WHO HAVE BEEN WORKING ON THIS OVER THE LAST 6 MONTHS.

WE HAVE A VOLUNTEER SHEET FOR KEY ROLES, HOWEVER ON THE DAY THERE WILL BE PLENTY OF JOBS TO BE DONE. PLEASE JOIN THEM IN MAKING THIS REVIVAL GREAT!

https://docs.google.com/spreadsheets/d/1G7iX21EP9cnZJ1FuEVFYMGszbQpX3SzKW91ob4lff_U/edit?usp=sharing

SPECTATING



WHILST YOU ARE MORE THAN WELCOME TO STAY AT THE CLUBHOUSE AND ENJOY THE BAR WATCHING THE SAILORS FROM THE TRACKERS, YOU CAN ALSO CHEER (HOOTERS, FLAGS, BANNERS & POM-POMS ALL WELCOMED) ON YOUR SAILOR AT VARIOUS POINTS ON THE RACECOURSE.

THE TIMINGS SHOWN ARE EXPECTATIONS ON THE FIRST BOATS, HOWEVER THE TRACKERS WILL GIVE A BETTER EXPECTATION.