

2019 UK 505 Class Euro Cup

6 – 8 September 2019

Hayling Island Sailing Club, Hampshire, UK

SAILING INSTRUCTIONS

1 RULES

- 1.1 The regatta will be governed by the rules as defined in *The Racing Rules of Sailing*.
- 1.2 When a gate start is used, RRS 29.1 is changed so that *Individual Recall* does not apply.
- 1.3 RRS 42.3(c) is substituted by 505 Class Rule B13 as follows:
Except on a beat to windward, when surfing (rapidly accelerating down the face of a wave) or planing is possible, the boat's crew may pull any sail in order to initiate or maintain surfing or planing, but not more than three repeated pulls and releases of the sail may be made for each wave or gust of wind.
- 1.4 In all Rules governing this regatta:
[DP] denotes a rule for which the penalty is at the discretion of the protest committee.
[SP] denotes a rule for which a standard penalty may be applied by the race committee without a hearing, or a discretionary penalty applied by the protest committee with a hearing (this changes RRS 63.1 and A5); and
[NP] denotes a rule that shall not be grounds for protest by a boat. This changes RRS 60.1(a).
- 1.5 RRS 44.1 and P2.1 are changed so that the Two-Turns Penalty is replaced by the One-Turn Penalty.

2 COMMUNICATIONS WITH COMPETITORS

- 2.1 There will be a briefing for competitors on Friday 6 Sept at 11:00.
- 2.2 Notices to competitors will be posted on the official notice board, located in the race office, near the clubhouse entrance.
- 2.3 Signals made ashore will be displayed from the flag masts on the club race control box.
- 2.4 [DP][NP] Boats shall not leave the shore until flag D is displayed ashore. The warning signal will be made not less than 60 minutes after flag D is displayed (30 minutes if racing in Chichester Harbour).
- 2.5 Any change to the schedule of races will be posted by 20:00 on the day before it will take effect and any change to the sailing instructions will be posted at least 30 minutes before flag D is displayed (SI 2.4) on the day it will take effect.
- 2.6 The class flag will be flag 'O'.

3 SCHEDULE OF RACES

- 3.1 The race schedule is as follows:

Date:	Time of 1st warning signal & scheduled races per day:	
	Time:	# Races:
Fri 6 Sept	13:00	2
Sat 7 Sept	11:00	3
Sun 8 Sept	11:00	2

- 3.2 The warning signal for each succeeding race in a day will be made as soon as practicable after the previous race..
- 3.3 To alert boats that a race will begin soon, the orange starting line flag (for a line start) or flag G (for a gate start) will be displayed with one sound at least two minutes before a warning signal is made.
- 3.4 On the last day of the regatta no warning signal will be made after 15:30.

4 RACING AREAS

- 4.1 Attachment A shows the location of racing areas '*Alpha*', '*Bravo*' and '*Charlie*'. Racing may also take place in Chichester Harbour.
- 4.2 The area to be used will be posted on the official notice board.
- 4.3 **Danger Area:** The entrance to Chichester Harbour is low lying and indistinct and is flanked on either side by West Pole and East Pole Sands that extend for more than a mile offshore. The West Pole and East Pole Sands merge to form Chichester Bar a little over half a mile offshore. Ebb tides in the entrance to the harbour can run at up to six knots on springs and, with a falling tide and strong winds from a southerly sector, a dangerous sea may be encountered. At certain states of the tide, it is difficult for patrol boats to operate in the area of West Pole Sands. Boats are therefore advised to follow the marked navigation channel.

5 THE COURSES

- 5.1 The diagrams in Attachment B show the courses, the course designations, the approximate angles between legs, the order in which marks are to be passed, and the side on which each mark is to be left.
- 5.2 The gate 3s/3p may be replaced by a single mark to be left to port.
- 5.3 No later than the warning signal, the race committee signal boat will display the course designation and the approximate compass bearing of the first leg.
- 5.4 To change the next windward leg of the course, the race committee will lay a new mark (mark 1) and remove the original mark as soon as practicable. When in a subsequent change a new mark is replaced, it will be replaced by an original mark.

6 MARKS

- 6.1 Marks 1, 1a, 2, 3s and 3p will be yellow inflated cylindrical buoys.
- 6.2 The new mark in SI 5.4 will be a black inflated buoy.
- 6.3 Starting marks for a line start will be a race committee signal boat at the starboard end, and a boat or buoy with an orange flag at the port end.
- 6.4 Starting marks for a gate start will be the port limit mark (a buoy with an orange flag laid close to the starting vessel), the pathfinder (until released) and the gate launch (displaying flag G) until the gate is closed.
- 6.5 Finishing marks will be a race committee boat and a boat or buoy with a blue flag.

7 THE START

- 7.1 When the orange flag is displayed a line start will be used:
 - (a) The starting line will be between staffs displaying orange flags on the starting marks.
 - (b) A boat starting later than 4 minutes after her starting signal will be scored Did Not Start. This changes RRS A4 and A5
- 7.2 When flag G is displayed a gate start will be used. The procedure for the gate start is as follows:
 - (a) Starting Area: The committee boat will be in the starting area, which will be to leeward of the course (Attachment B). The port limit mark will be laid at the leeward end of the gate.
 - (b) Distinguishing Flags & Signals: The committee boat and gate launch will display flag G. The starting signals will be made from the committee boat.
 - (c) Selection of Pathfinder: The race committee will nominate the pathfinder and a reserve pathfinder for the first race. Subsequently, the pathfinder will be the seventh boat in

the preceding race. When she is unable to race, or has been the pathfinder previously in the event, the pathfinder will be the eighth boat in the preceding race and so on. The reserve pathfinder will be the next boat in the previous race. The sail numbers of pathfinder and reserve for the first race of each day will be posted on the official notice board, and will be displayed on the side of the committee boat before flag G is displayed. If more than one race is sailed on the same day, the numbers will be displayed on the side of the committee boat before flag G is displayed. The pathfinder and reserve shall report to the committee boat as soon as possible after her number is displayed and before the preparatory signal. A pathfinder or reserve that fails to report will be scored Did Not Start. This changes RRS A4 and A5.

- (d) Positioning of Pathfinder and Gate Launch: At or up to 10 seconds before the starting signal the pathfinder shall commence her close-hauled port tack from within one boat length of the port limit mark, leaving the mark to port, followed by the gate launch which will keep close astern of her. If the pathfinder is unable to do this, the race committee will signal a general recall.
- (e) Starting Line: The starting line for all boats except the pathfinder will be between the port limit mark and the centre of the stern of the gate launch.
- (f) Pathfinder Course: The approximate time that the gate launch will be in motion along the port tack course after the starting signal will be displayed on the starboard side of the committee boat before the warning signal. The pathfinder shall maintain her close-hauled course until she is released by a hail from the gate launch, and may tack onto starboard. After releasing the pathfinder, the gate launch will maintain its course and speed. At the end of the period of time displayed on the committee boat (which may be extended at the discretion of the race committee) the gate launch will stop, lower flag G half way with a sound, and drift for at least one minute. Flag G will then be fully lowered with a sound to indicate the closing of the gate. No boat shall start after the gate start line is closed.
- (g) Starting: Boats other than the Pathfinder shall start by crossing the starting line on starboard tack after the starting signal and before the gate closes.
- (h) A boat that has not already started correctly, and that is on the course side of the gate launch while the gate is open, shall not cross the starting line from the course side.
- (i) Interference with Pathfinder and Gate Launch: After the preparatory signal, a boat shall not threaten the unobstructed sailing of the pathfinder, and shall not interfere with or try to pass between the pathfinder and the gate launch, or cause another boat to interfere in these ways.
- (j) If a boat infringes instructions (h) or (i) and is identified, she will be disqualified without a hearing, even if the race is restarted, re-sailed, or rescheduled. If a general recall is signaled or the race is abandoned after the starting signal, the race committee will display her sail number before the next warning signal for that race, and if the race is restarted or resailed she shall not sail in it. If she does so her disqualification will not be excluded in calculating her series score. This changes RRS 36 and 63.1.
- (k) A boat that cannot avoid touching a starting mark may hail a right-of-way boat for room and shall retire.

8 THE FINISH

The finishing line will be between staffs displaying blue flags on the finishing marks.

9 TIME LIMITS & TARGET TIMES

9.1 The time limit and target time in minutes is as follows:

<i>Time limit</i>	<i>Finish window</i>	<i>Target time</i>
90	15	60

Failure to meet the target time will not be grounds for redress. This changes RRS 62.1(a).

- 9.2 Boats failing to finish within the finish window time after the first boat sails the course and finishes will be scored Time Limit Expired without a hearing (scoring abbreviation TLE). This changes RRS 35, 63.1 and A5.

The points score for TLE shall be two more than the number of boats that sailed the course and finished within the finishing window time.

10 PROTESTS, PENALTIES & REQUESTS FOR REDRESS

- 10.1 Protest forms are available at the race office. Protests and requests for redress or reopening shall be delivered there within the appropriate time limit.
- 10.2 The protest time limit is 90 minutes after the last boat has finished the last race of the day or the race committee signals no more racing today, whichever is later.
- 10.3 Notices will be posted no later than 30 minutes after the protest time limit to inform competitors of hearings in which they are parties or named as witnesses.
- 10.4 Notices of protests by the race committee, technical committee or protest committee will be posted to inform boats under RRS 61.1(b).
- 10.5 Penalties for breaches of class rules, or rules in the NoR and SIs marked [DP] or [SP] should there be a hearing, are at the discretion of the protest committee, and may be less than disqualification.
- 10.6 For breaches of rules marked [SP], the race committee may apply a standard penalty without a hearing of one point added to the boat's series score. However, the race committee may protest a boat if it considers the standard penalty to be inappropriate. A boat that has been penalized with a standard penalty can neither be protested for the same incident by another boat nor can another boat request redress for this race committee action. This changes RRS 60.1, 63.1 and A5.
- 10.7 A list of boats that have been penalized under SI 10.6 will be posted.
- 10.8 On the last scheduled day of racing, a request for redress based on a protest committee decision shall be delivered no later than 30 minutes after the decision was posted. This changes RRS 62.2.

11 SCORING

- 11.1 Two races are required to be completed to constitute a series.
- 11.2 (a) When fewer than four races have been completed, a boat's series score will be the total of her race scores.
- (b) When four or more races have been completed, a boat's series score will be the total of her race scores excluding her worst score.
- 11.3 To request correction of an alleged error in posted race or series results, a boat may complete a scoring enquiry form available at the race office.

12 SAFETY REGULATIONS

- 12.1 [DP][NP] Competitors shall wear personal flotation devices at all times while afloat, except briefly while adjusting clothing or personal equipment.
- 12.2 Check-out and check-in of competitors will apply as follows:
- (a) The tally control point to check-out and check-in competitors will be located at the race office.
- (b) Tallies comprise numbered rubber wristbands. Numbers will be allocated at registration, and posted on the official notice board. Tallies shall be worn visibly by all competitors, over clothing, on the right wrist, at all times while afloat.
- (c) [DP][NP][SP] Competitors shall check-out before racing by collecting their tallies.
- (d) [DP][NP][SP] Competitors shall check-in immediately on returning to shore after racing, by returning the tallies to tally control.
- 12.3 [DP][NP] A boat that retires from a race, or does not intend to start a race, shall notify the race committee as soon as possible.

12.4 [DP][NP] In accordance with NoR 12, boats shall return to and remain in their assigned berths whilst ashore.

13 REPLACEMENT OF CREW OR EQUIPMENT

13.1 [DP] Substitution of competitors will not be allowed without prior written approval of the race committee.

13.2 [DP] Substitution of damaged or lost equipment will not be allowed unless authorized by the race committee. Requests for substitution shall be made to the committee at the first reasonable opportunity.

14 EQUIPMENT & MEASUREMENT CHECKS

[DP] When instructed by a member of the race committee or technical committee, a boat shall proceed as requested to a designated area for inspection. Equipment may be inspected at any time in accordance with NoR 6.

15 ADVERTISING & MEDIA

15.1 [DP] Boats and competitors shall comply with World Sailing Regulation 20, Advertising Code. Boats are required to display advertising chosen and supplied by the organizing authority or International 505 Class Association.

15.2 [DP] Boats may be required to carry cameras, sound equipment or positioning devices as specified and provided by the organizing authority.

16 OFFICIAL BOATS

Protest committee, technical committee and media boats will display identification.

17 SUPPORT BOATS

[DP] Support persons shall stay outside areas where boats are racing from the time of the preparatory signal for the first class to start until all boats have finished or retired or the race committee signals a postponement, general recall or abandonment.

18 TRASH DISPOSAL

Trash may be placed aboard support or official boats.

19 RADIO COMMUNICATION

[DP] Except in an emergency, a boat that is racing shall not make voice or data transmissions and shall not receive voice or data communication that is not available to all boats.

20 INSURANCE

[DP][NP] Each participating boat shall be insured with valid third-party liability insurance with a minimum cover of £2million per event or the equivalent.

21 RISK STATEMENT

21.1 Rule 4 of the Racing Rules of Sailing states: "The responsibility for a boat's decision to participate in a race or to continue racing is hers alone."

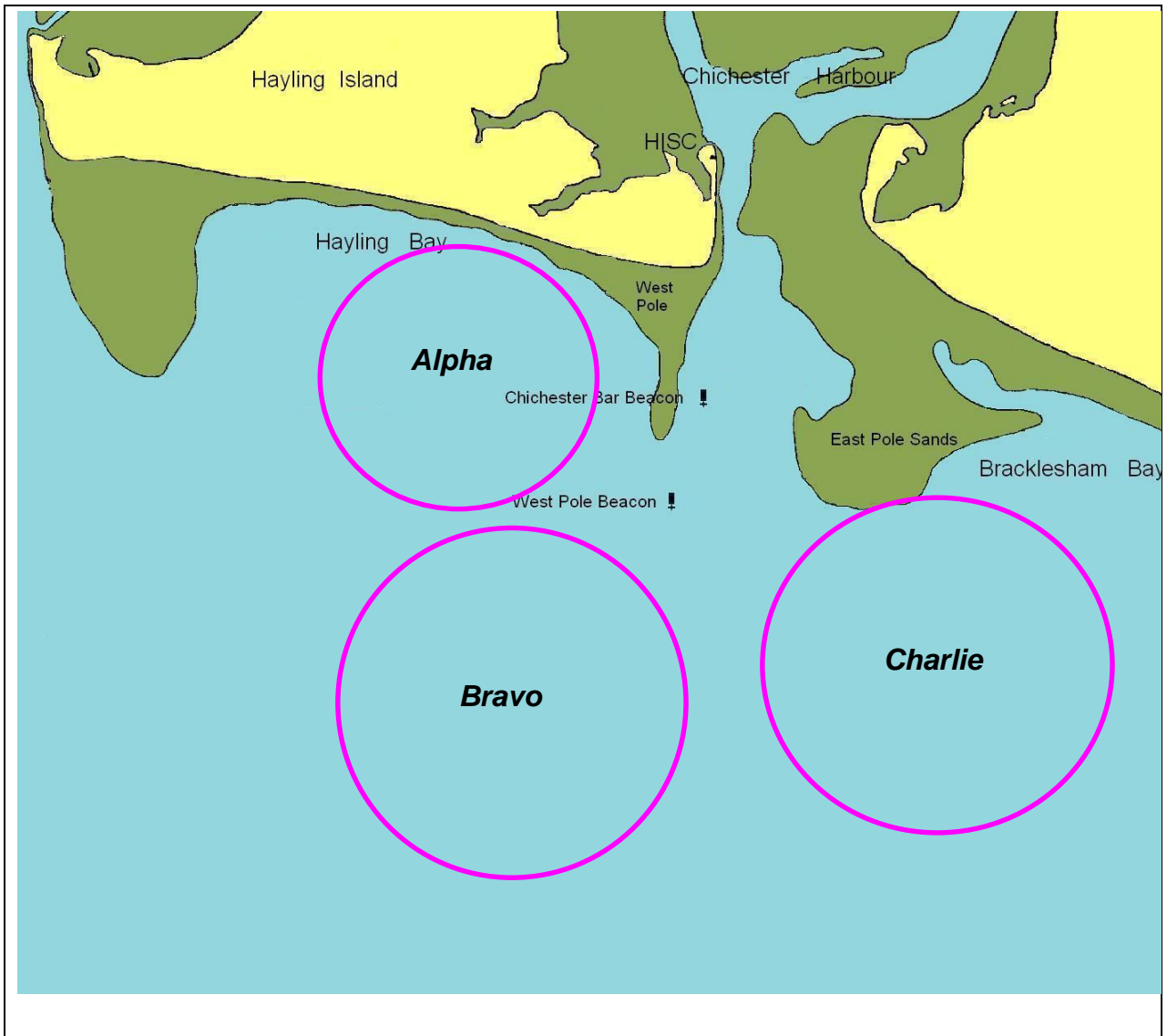
21.2 The Organizing Authority accept no responsibility or liability for loss of life or injury to skipper or crew or others, or for the loss of, or damage to, any vessel or property.

21.3 Sailing is by its nature an unpredictable sport and therefore inherently involves an element of risk. By taking part in the event, each competitor agrees and acknowledges that:

- (a) They are aware of the inherent element of risk involved in the sport and accept responsibility for the exposure of themselves, their crew and their boat to such inherent risk whilst taking part in the event;
- (b) They are responsible for the safety of themselves, their crew, their boat and their other property whether afloat or ashore;
- (c) They accept responsibility for any injury, damage or loss to the extent caused by their own actions or omission;
- (d) Their boat is in good order, equipped to sail in the event and they are fit to participate;

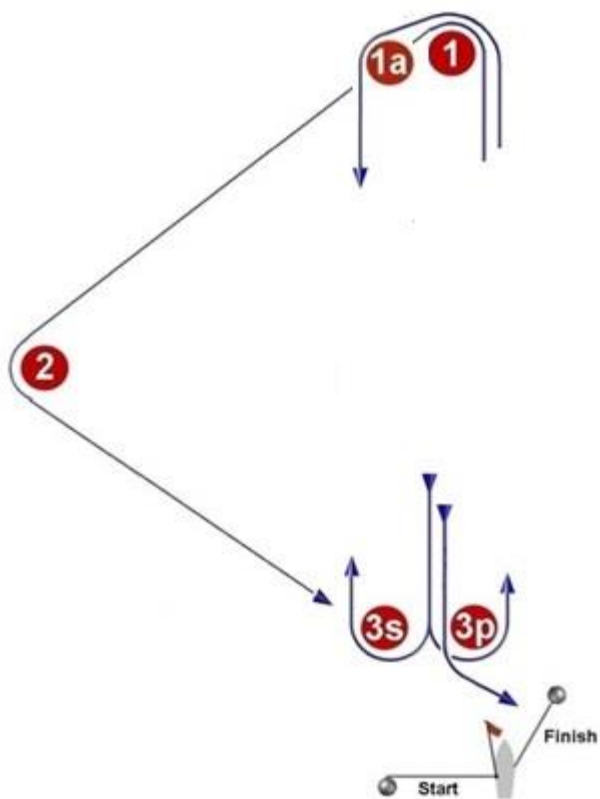
- (e) The provision of a race management team, patrol boats and other officials and volunteers by the event organizer does not relieve them of their own responsibilities;
- (f) The provision of patrol boat cover is limited to such assistance, particularly in extreme weather conditions, as can be practically provided in the circumstances.
- (g) It is their responsibility to familiarize themselves with any risks specific to this venue or this event drawn to their attention in any rules and information produced for the venue or event and to attend any safety briefing held for the event.

Attachment A
RACING AREAS



Attachment B
COURSE DIAGRAMS

WINDWARD - LEEWARD - TRIANGLE



Signal: Mark rounding order:

T2 Start – 1 – 1a – 3s/3p – 1 – 2 – 3p – Finish

T3 Start – 1 – 1a – 3s/3p – 1 – 2 – 3p – 1 – 1a – 3p – Finish

WINDWARD - LEEWARD



Signal: Mark rounding order:

L2 Start – 1 – 1a – 3s/3p – 1 – 1a – 3p – Finish

L3 Start – 1 – 1a – 3s/3p – 1 – 1a – 3s/3p – 1 – 1a – 3p – Finish